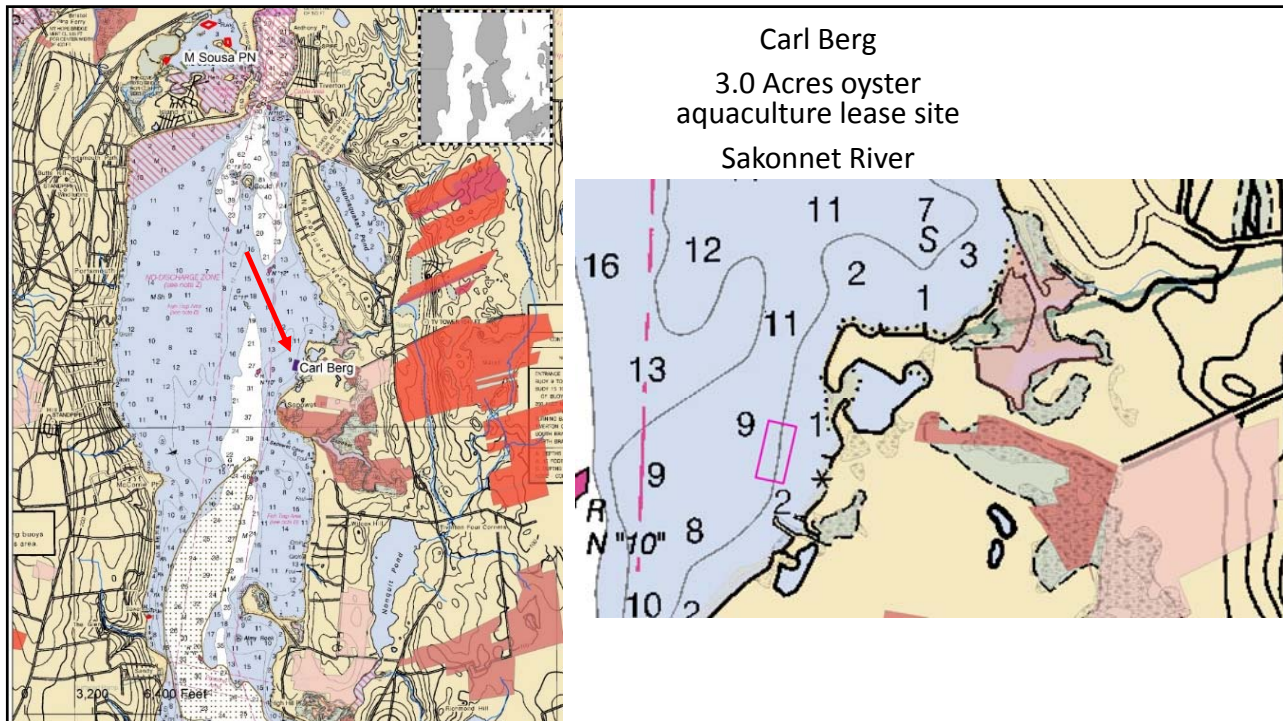
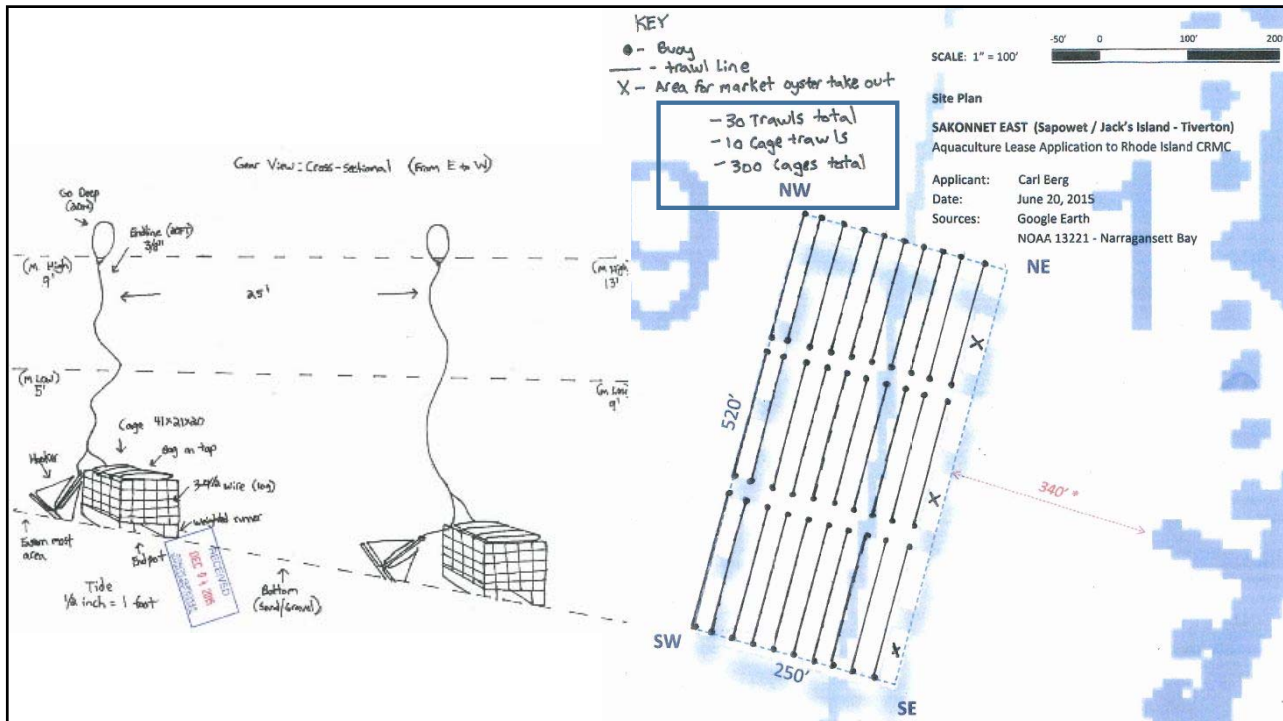
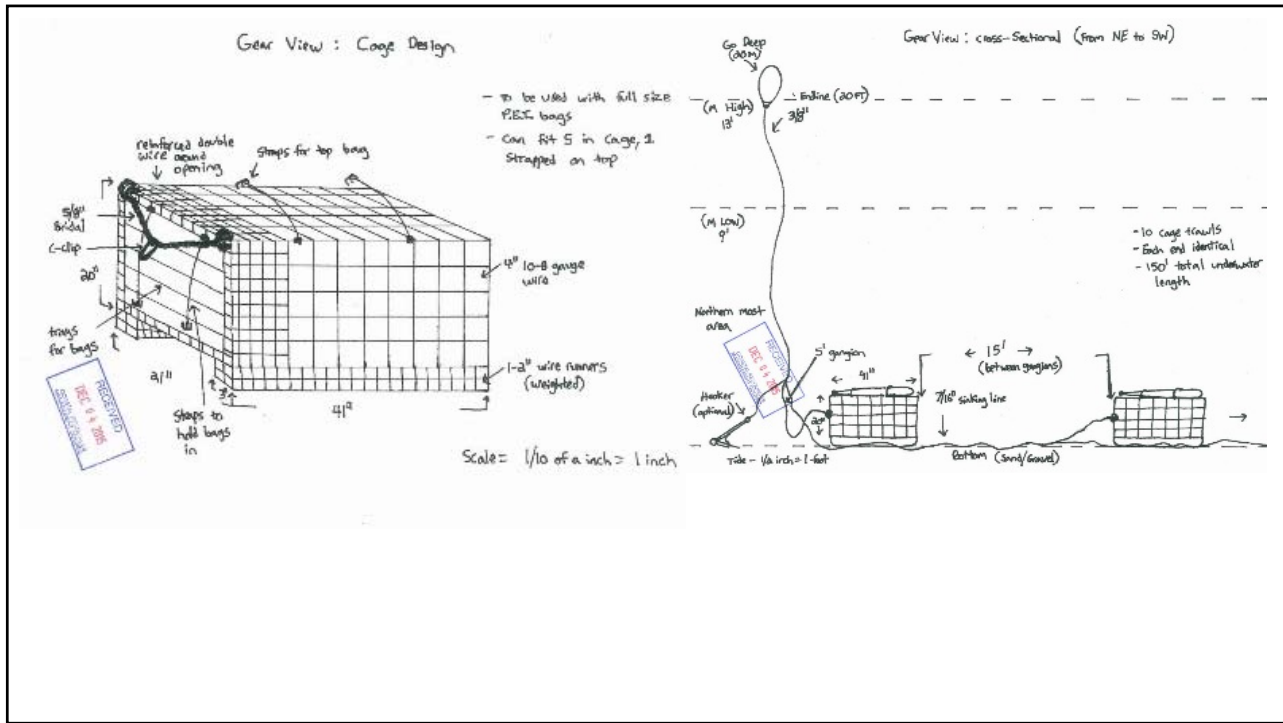
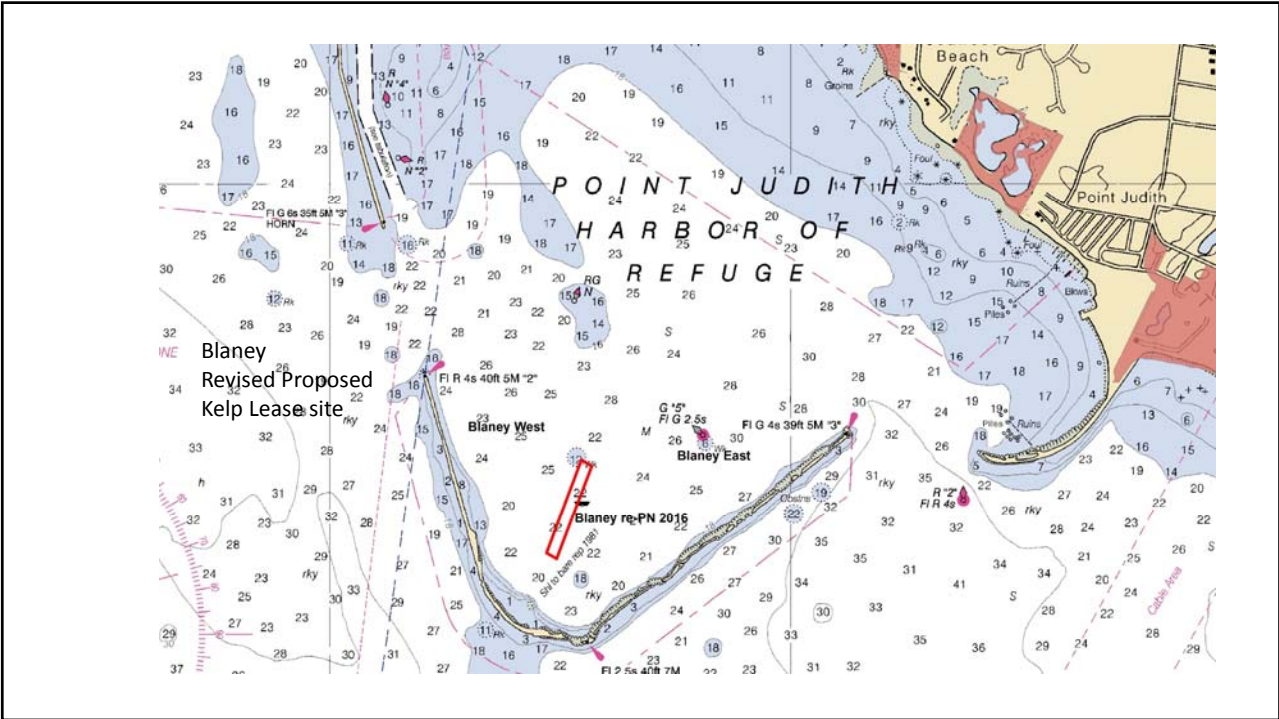
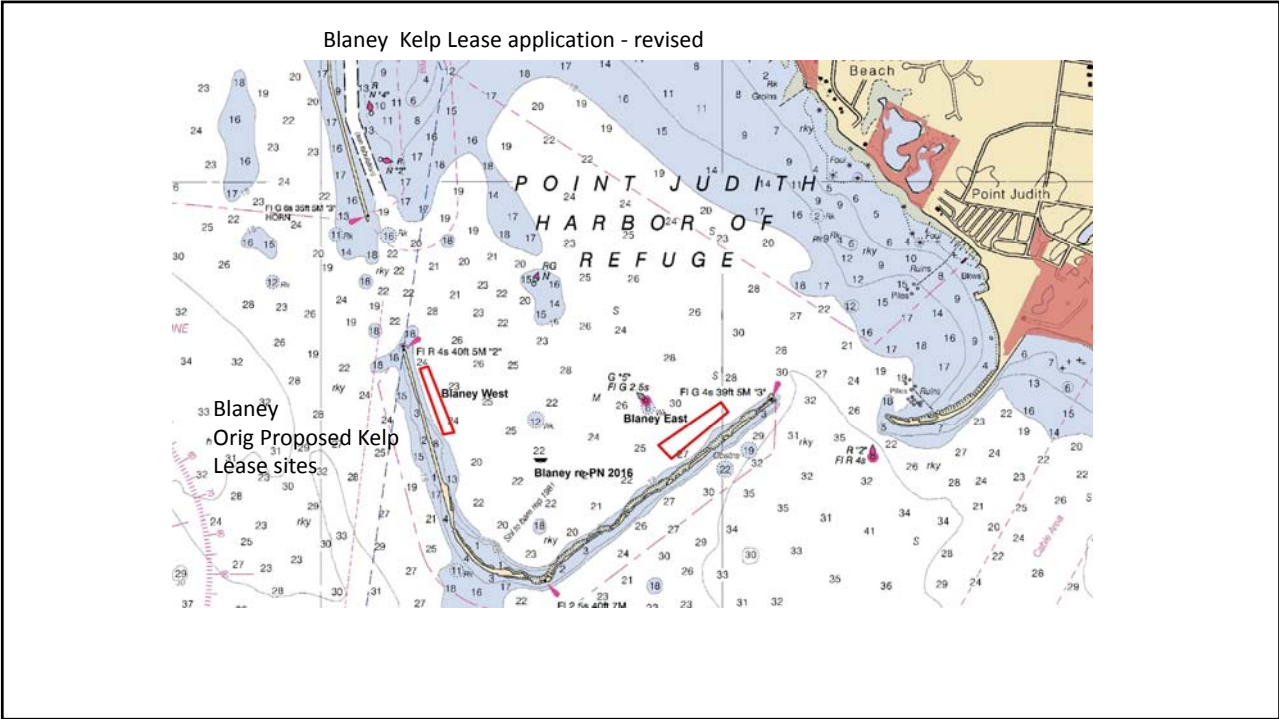


RIMFC Shellfish Advisory Panel Meeting

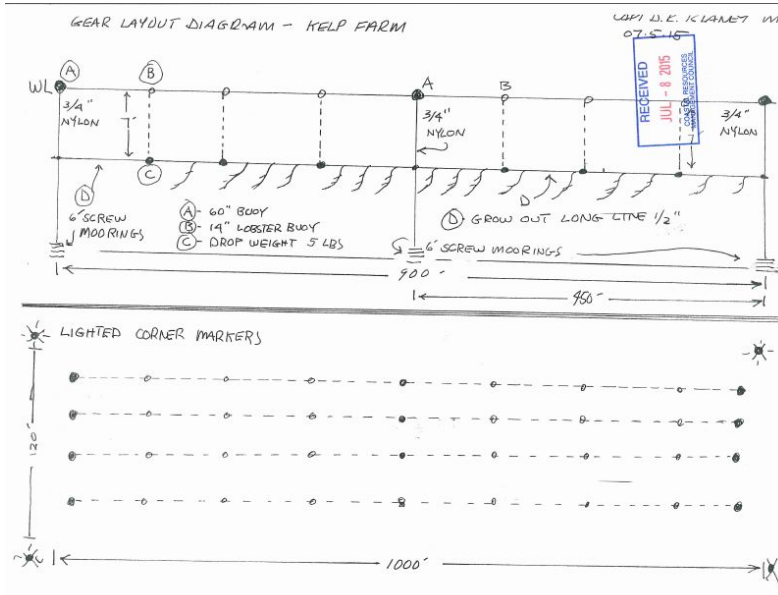
Date: Thursday Feb. 18, 2016
4:30PM
Fort Wetherill Marine Laboratory
3 Fort Wetherill Road, Jamestown, RI





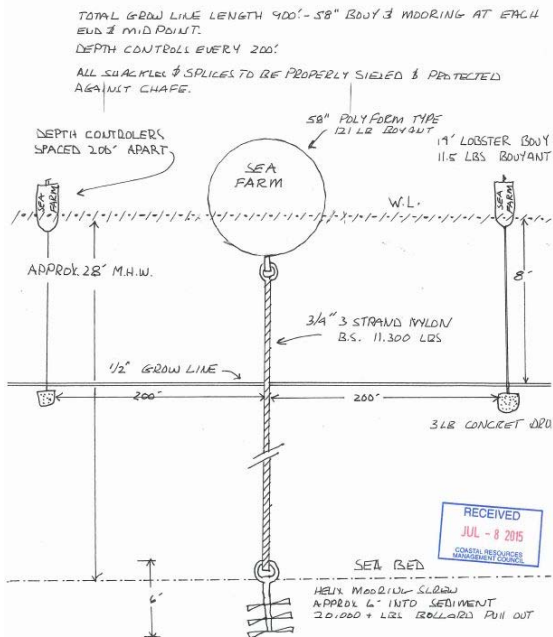


Blaney 4 parallel 1000' lines – ea. 25' apart w/ 6' screw type moorings at ends



Set gear late Sept. + Oct.
 "Plant" sugar kelp, *Saccharina latissimi* (i.e., deploy kelp lines) late Oct.+ Nov
 Harvest Late May
 Gear to be removed in off season

GROW-OUT LINES MOORING & BODY DETAIL



Set gear late Sept. + Oct.
 "Plant" sugar kelp, *Saccharina latissimi* (i.e., deploy kelp lines) late Oct.+ Nov
 Harvest Late May
 Gear to be removed in off season