

Bay State Wind

NOTICE TO FISHERMEN

Geotechnical survey to start approximately on
October 7, 2016
Estimated duration 15 days (weather permitting)

Survey Vessel Details:

RV Fugro Synergy
LOA 340 ft. Flag: Bahamas

Bridge VSAT phone: 01131107130581
Satellite phone: 1 (713) 714-5894
Standing by on VHF Channel 16

When the survey is taking place

RV Fugro Synergy will be conducting a geotechnical survey in an area south of Martha's Vineyard for 15 days (weather permitting) starting about October 7, 2016.

Why the survey is taking place

In August and September an exploratory geophysical survey mapped sea bed conditions within the BOEM Massachusetts Wind Energy Area (WEA), lease area OCS-A 0500. Following up, in October a geotechnical survey will test bottom conditions in 18 specific locations identified in the previous survey. This information will assist engineering of future wind turbines.

Survey vessel transits

The survey is not expected to interfere with near-by fishing activities. Fishermen are encouraged to contact RV Fugro Synergy Bridge to coordinate with the on board FIR.

Survey design and equipment to be used

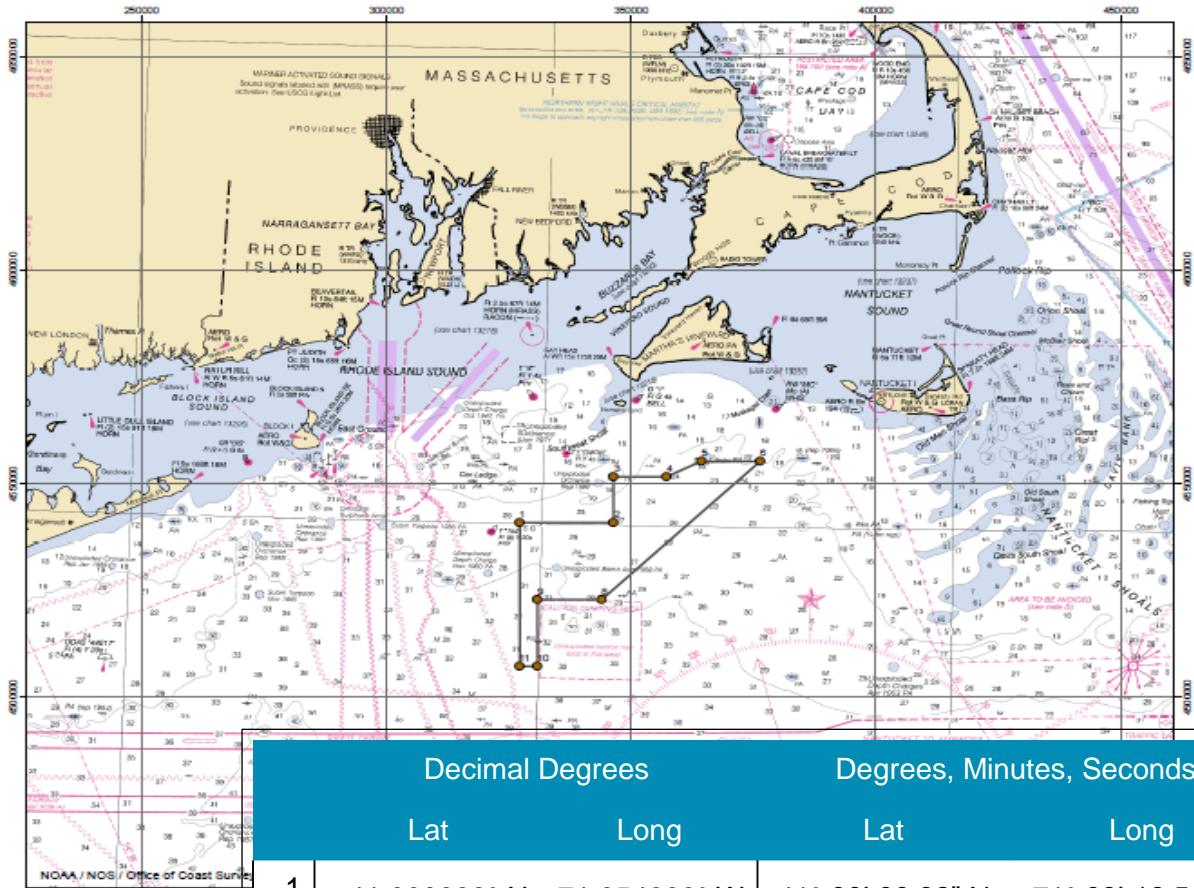
The survey vessel will use dynamic positioning systems to maintain station precisely while testing is taking place. Each testing station may require the vessel to maintain position for 2 to 24 hours depending on conditions and testing activity. Operations will proceed 24 hours a day.

This Ground Investigation will consist of a series of shallow Vibrocore Holes, Cone Penetration Tests (CPTs) and core samples.

Voluntary half-mile buffer

Mariners are requested to provide RV Fugro Synergy a wide berth of **one half mile** at all times while on site. Passing vessels are requested to reduce speed if possible. When operating in the vicinity of RV Fugro Synergy please be aware that the vessel may move to a new position within the site without prior notification.

Survey Area co-ordinates



	Decimal Degrees		Degrees, Minutes, Seconds	
	Lat	Long	Lat	Long
1	41.000088° N	71.054600° W	41° 00' 00.32" N	71° 03' 16.56" W
2	41.003931° N	70.826429° W	41° 00' 14.15" N	70° 49' 35.14" W
3	41.101169° N	70.829121° W	41° 06' 04.21" N	70° 49' 44.84" W
4	41.103139° N	70.700567° W	41° 06' 11.30" N	70° 42' 02.04" W
5	41.136789° N	70.615653° W	41° 08' 12.44" N	70° 36' 56.35" W
6	41.138705° N	70.472722° W	41° 08' 19.34" N	70° 28' 21.80" W
7	No point	No point	No point	No point
8	40.841410° N	70.850425° W	40° 50' 29.08" N	70° 51' 01.53" W
9	40.838793° N	71.006912° W	40° 50' 19.65" N	71° 00' 24.88" W
10	40.698345° N	71.002689° W	40° 41' 54.04" N	71° 00' 09.68" W
11	40.697598° N	71.045274° W	40° 41' 51.35" N	71° 02' 42.99" W



RV Fugro Synergy

Contact the Onboard Fishing Industry Representative

Fishermen are requested to remain aware of these survey operations and to maintain a prudent distance (**half-mile minimum**) from the RV Fugro Synergy while the vessel is on station with dynamic positioning systems. A local Fishing Industry Representative (FIR), Steve Welch, will act as the onboard fisheries point of contact, advising the vessel master on local fishing activities.

Fishermen working in the Survey Area are advised to contact **FIR Steve Welch** through the RV Fugro Synergy Bridge to coordinate activities:

RV Fugro Synergy VSAT phone 01131107130581
Standing by on VHF channel 16

In advance of survey operations local fishermen with questions may also contact:

John Williamson, DONG Energy Fishery Liaison
1 (207) 939-7055 john@seakeeper.net

Please add your contact information to our file of fishermen in the lease area. Fishermen's information is respected as confidential.

DONG Energy is lessee to develop an offshore wind farm in federal waters

In April 2015, the Bureau of Ocean Energy Management awarded a lease for area OCS-A 0500, in the Massachusetts Wind Energy Area (WEA), to RES American Developments. In May 2015, BOEM announced the transfer of assignment of that lease to DONG Energy. Comprising 187,523 acres (222 sq nm), the lease area is the western-most portion of the Massachusetts WEA, beginning approximately 12 miles due south of Martha's Vineyard. The project name is Bay State Wind.

A description of the BOEM lease process, lease areas and maps can be found at the BOEM website: <http://www.boem.gov/Atlantic-Fishing-Industry-Communication-and-Engagement>

Site Assessment and geophysical survey of the Bay State Wind area

For the next three years DONG Energy will collect data and perform detailed assessments of the physical, biological and economic characteristics of the lease area. The first step of data collection was a geophysical survey in August and September 2016. A geotechnical survey in October 2016 will further refine the area mapping.

Wind farm would be smaller than Survey Area

A future wind farm will be smaller than the Survey Area, but sited somewhere within its boundaries. The ideal location has yet to be identified.

Fishermen's knowledge, Fishery Liaison and Fishing Industry Representative

Fishermen in the region will be consulted at several stages of the data collection process. To this end DONG Energy has engaged a Fishery Liaison Officer to work with fishing community leaders. Additionally, an experienced local fisherman will be on the survey vessel for the duration of the survey to ensure daily contact with vessels fishing in the area and to advise the survey captain to avoid gear conflicts. Fishermen will be requested to give wide berth to the survey vessel, but should not otherwise be inconvenienced.

The importance of fishing

DONG Energy recognizes the importance of this lease area to fishing communities of southern New England and the Mid-Atlantic Bight. To that end, DONG Energy intends to fully consult with fishermen from all associated fishery sectors at every stage of development of the Bay State wind farm.

DONG Energy Contacts	Company	Role	Telephone Email	Email
John Williamson	FV Sea Keeper	Fisheries Liaison for Bay State Wind	1 (207) 939-7055	john@seakeeper.net
Stephen Welch	FV Mystic	Fishing Industry Representative	1 (781) 422-1084	welchstephen@comcast.net
Jim Neveu	DONG Energy (US)	Environmental Manager	1 (617) 535-7646	janev@dongenergy.com
Gunnar Krusborg	DONG Energy (Denmark)	Site Investigation Project Manager	0114599516295	GUNKR@dongenergy.dk
Malgorzata Zorawinska	DONG Energy (Denmark)	Site Investigation Project Manager	0114599559433	malzo@dongenergy.dk