



FISHERIES REPRESENTATIVE JOB POSTING

Deepwater Wind (DWW) is America's leading offshore wind developer. The company's Block Island Wind Farm became the first offshore wind farm in the nation when it began operating in December 2016. Deepwater Wind is developing the 90 MW South Fork Wind Farm (SFWF), which is proposed to interconnect with the mainland electric grid in East Hampton, New York and will sell its output to the Long Island Power Authority. Attached is a figure that shows the SFWF area and the offshore submarine cable route, more information is available at www.dwwind.com.

DWW is committed to meaningful engagement with the commercial and recreational fishing communities. DWW is seeking letters of interest and/or resumes from commercial and recreational fishermen whose home port is Point Judith or other ports in Rhode Island, to act as a Fisheries Representative. The Fisheries Representative will be the fishing community's primary point of contact for communicating its concerns to DWW. ***Although funded by DWW, the Fisheries Representative works on behalf of the fishing fleet.***

DWW recognizes that many forms of commercial and recreational fisheries are active in Rhode Island. With this job posting, DWW is seeking to engage at least two Fisheries Representatives. One to represent commercial fishing, another to represent recreational fishing. In addition, gear and / or other Rhode Island port specific Fisheries Representative(s) may also be engaged.

We encourage all interested applicants to submit a letter of interest and/or a resume.

THE FISHERIES REPRESENTATIVE SHALL:

- Provide unbiased representation of the fishing community. Be the primary point of contact for fishermen based in or visiting Rhode Island ports to communicate concerns
- Help disseminate project information to the fishermen who are based in or visit Rhode Island ports
- Work directly with the DWW Fisheries Liaison to communicate concerns from the Fisheries Representatives constituents
- Assist the DWW Fisheries Liaison and DWW to understand fishing activity in the area of the SFWF and the submarine cable proposed to connect to Long Island (e.g. gear types, specific fisheries)
- Assist the DWW Fisheries Liaison and DWW to understand particular fishing sensitivities the fishing community has related to proposed offshore wind development
- Work with the DWW Fisheries Liaison and DWW to develop a fisheries communication plan(s)
- Provide feedback to the DWW Fisheries Liaison regarding the communication plan(s) and work with the DWW Fisheries Liaison and DWW to make improvements to the communication plan(s).

SKILL SET/MINIMUM QUALIFICATIONS:

- Experience as a commercial or recreational fisherman working out of a Rhode Island port, preference will be given to active commercial and recreational fishermen
- Knowledge respecting fishing in the region including seasons, key species, fishing patterns, gear types
- Strong communication skills
- Required training and skills to work offshore
- Basic computer skills
- Must have access to the internet

ESTIMATED LEVEL OF COMMITMENT:

It is our goal to identify active commercial and recreational fishermen and baymen for this role. The hours are flexible and will vary on a monthly basis. On average, the role will require 20 hours per month.

COMPENSATION: \$50 / hour.

INDEPENDENT CONTRACTOR:

As an independent contractor, the fishing representative will be fully responsible for paying his/her own taxes and maintaining his/her own benefits.

INSURANCE:

The successful candidates will be expected to maintain appropriate insurance coverage.

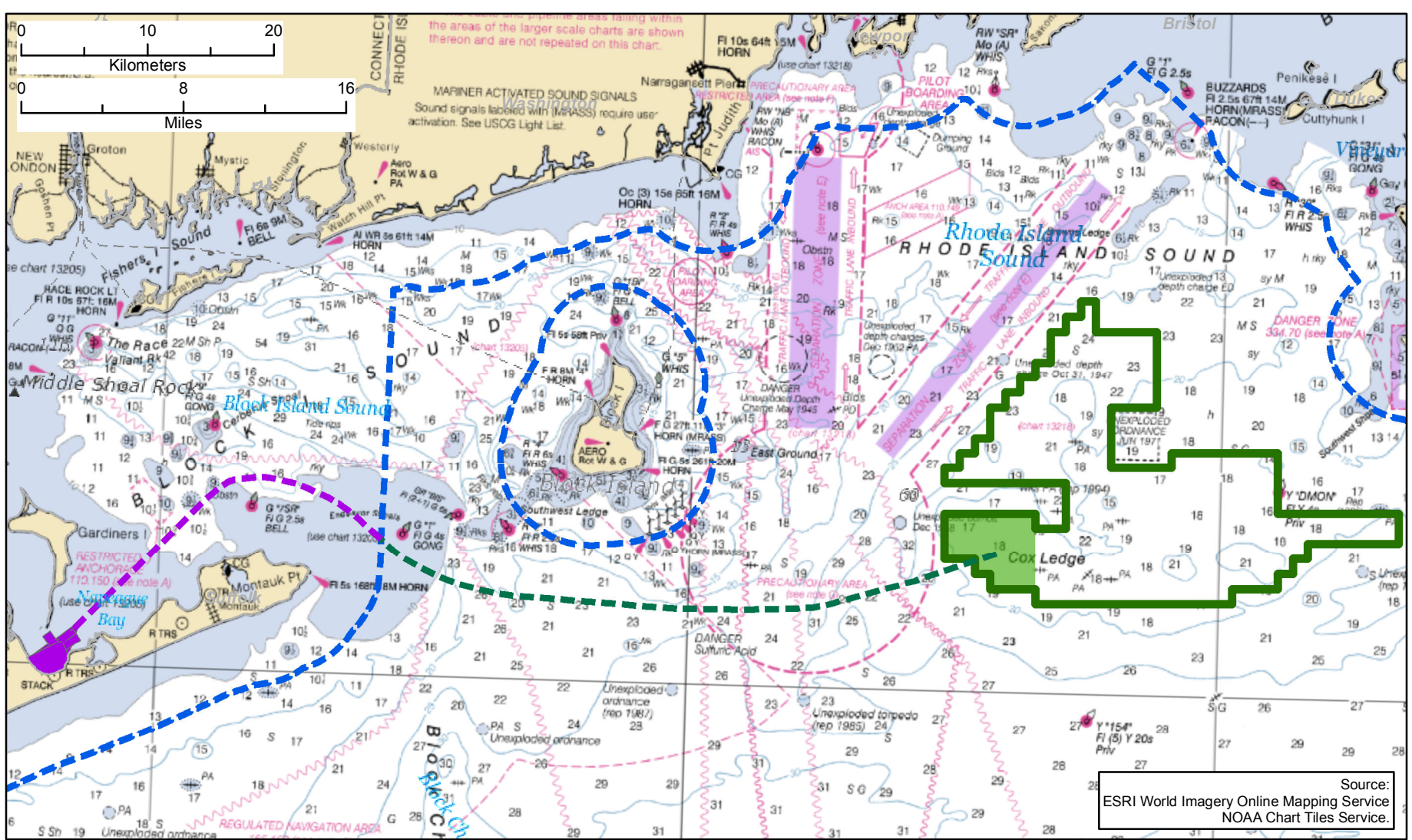
SELECTION PROCESS:

Candidates interested in the Fisheries Representative role should send a cover letter and resume to:

Aileen Kenney
VP of Permitting & Environmental
Deepwater Wind
56 Exchange Terrace
Providence, RI 02903
or via email to: akenney@dwwind.com

Cover letters and resumes must be received via email or post marked by April 21, 2017.

Deepwater Wind is an Equal Opportunity Employer (EOE). This job posting is not an offer of employment.



- Legend**
- 3-mile State Waters Boundary
 - Federal Water (SFEC OCS)
 - New York State Water (SFEC NYS)
 - South Fork Export Cable Shore Approach Area
 - South Fork Wind Farm Project Area
 - Lease Area (OCS-A-0486)

Note: Soundings in fathoms at mean low water.



South Fork Wind Farm Project Location
Deepwater Wind
New York/Rhode Island, US