

**RI Department of Environmental
Management**

Division of Marine Fisheries

PRE-HEARING WORKSHOP

January 8, 2018



Workshop Rules of Engagement

- Marine Fisheries staff will provide presentation on each of the possible regulation amendments
- Discussion will ensue upon completion of each presentation. Discussion should focus on:
 - Understanding of the rationale behind each of the proposed amendments;
 - Recommendations of alternatives.
- Dates to remember:
 - January 19: Hearing items to be public noticed with Sec. of State. Any additional or alternate proposals must be provided no later than January 17 to be considered for inclusion into the public notice.
 - February 19: Public hearing
 - February 26: End of public comment period
 - March 5: RI Marine Fisheries Council
 - IMPORTANT! The workshop discussion is not an official public record. Comments and/or proposals may be submitted during the public hearing on February 19th or provided in writing/email during the public comment period.



Workshop Items

- Recreational Summer Flounder
- Recreational Black Sea Bass
- Recreational and commercial Scup
- Recreational and commercial Tautog
- Recreational and commercial Bluefish
- Recreational and commercial Striped Bass
- Commercial Menhaden
- Skate
- Proposed Jacobs Point Shellfish Management Area
- Clarification of language regarding shellfish harvest in areas declared polluted
- Clarification of language regarding prohibited area for the harvest of Surf clams
- Floating buoy line prohibition within eight (8) feet of the surface of the water for all pots (currently required only for BSB/Scup pots).
- Commercial buoy and vessel color scheme requirement for all pots (currently required only for lobster pots)





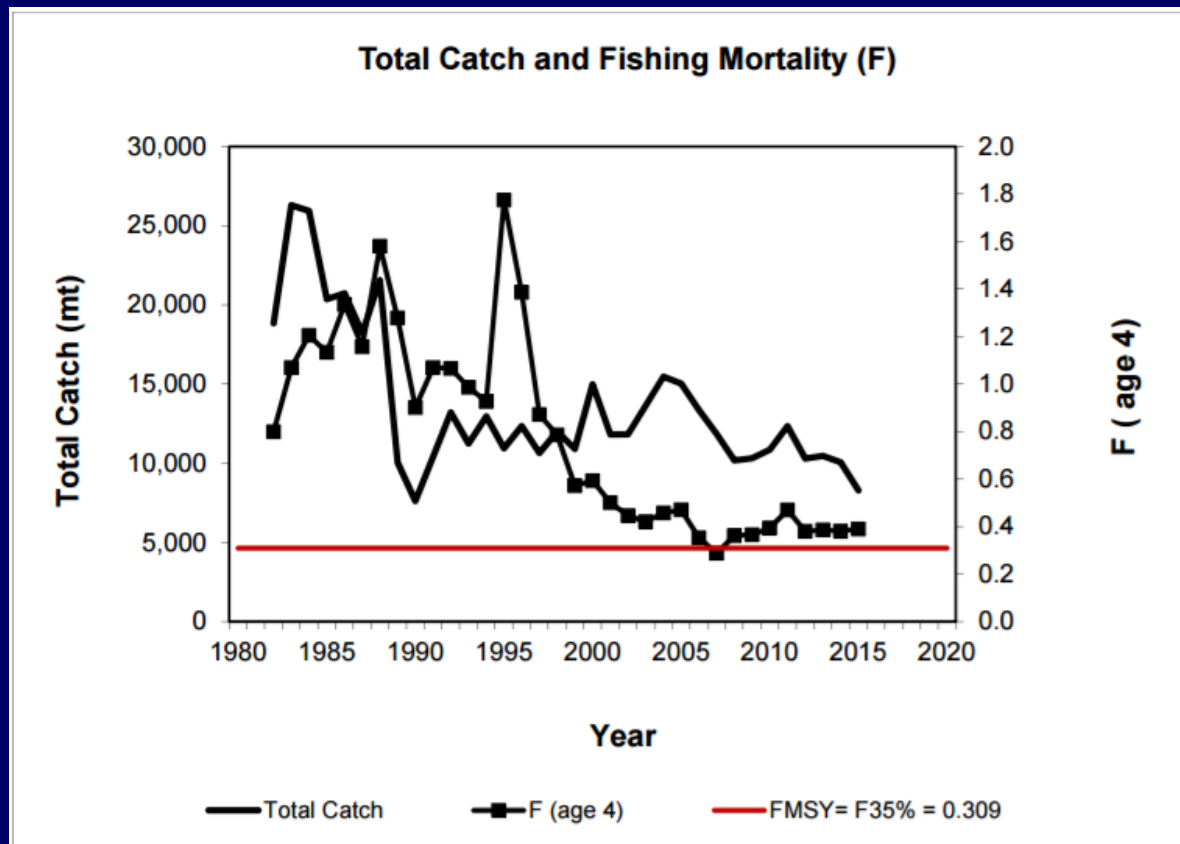
Summer Flounder

- Summary of Stock Status
- ASMFC Management of Summer flounder
- 2017 Rhode Island Recreational Fishery Performance
- Recommendations/proposals for 2018



Summer Flounder Stock Status

- Update in 2016: Based on SAW/SARC 57 assessment.
- The summer flounder stock is not overfished, but overfishing is occurring relative to biological reference points.
- Fishing mortality was estimated to be 0.390 in 2015, above the threshold F reference point = 0.309 (also above F target = 0.255).



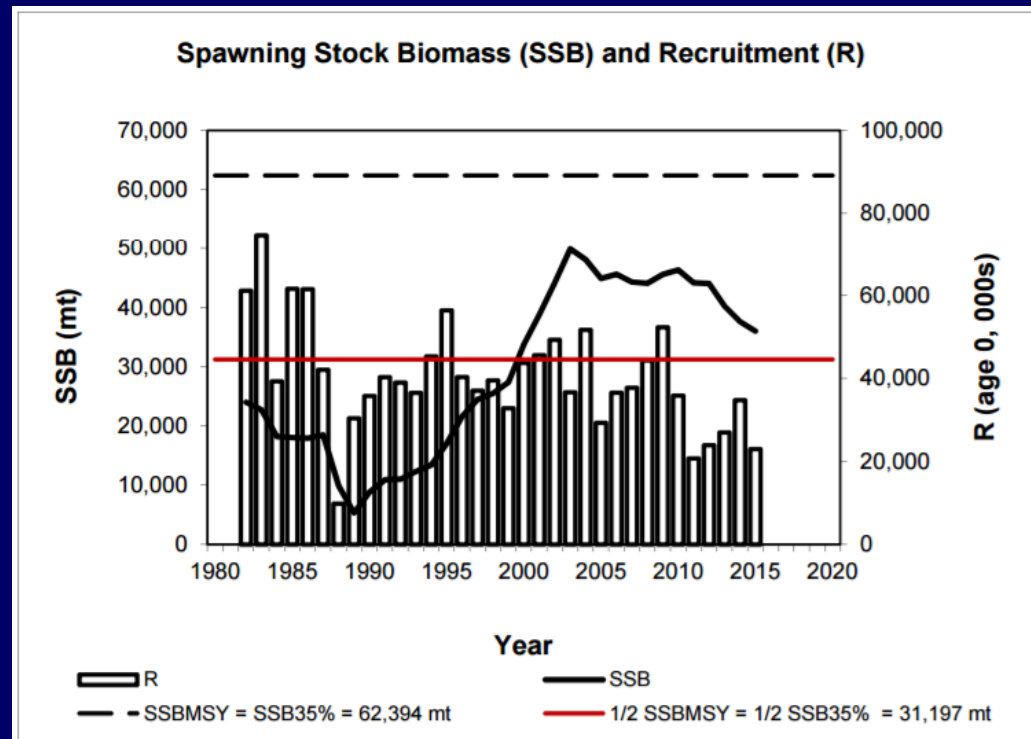
Summer Flounder

- Stock Status cont'd:

- SSB estimated to be 79.9 m lbs in 2015, below the SSB reference point = 137.6 m lbs but above the SSB threshold = 66.2 m lbs.
- The 2015 year class is currently estimated to be about 23 million fish, well below the average of 41 million fish.

- A retrospective pattern in recruitment is evident, the 2008 and 2009 large year classes have dropped significantly in recent updates.

- Given previous specification setting, a 15% increase in quota is predicted for 2018.

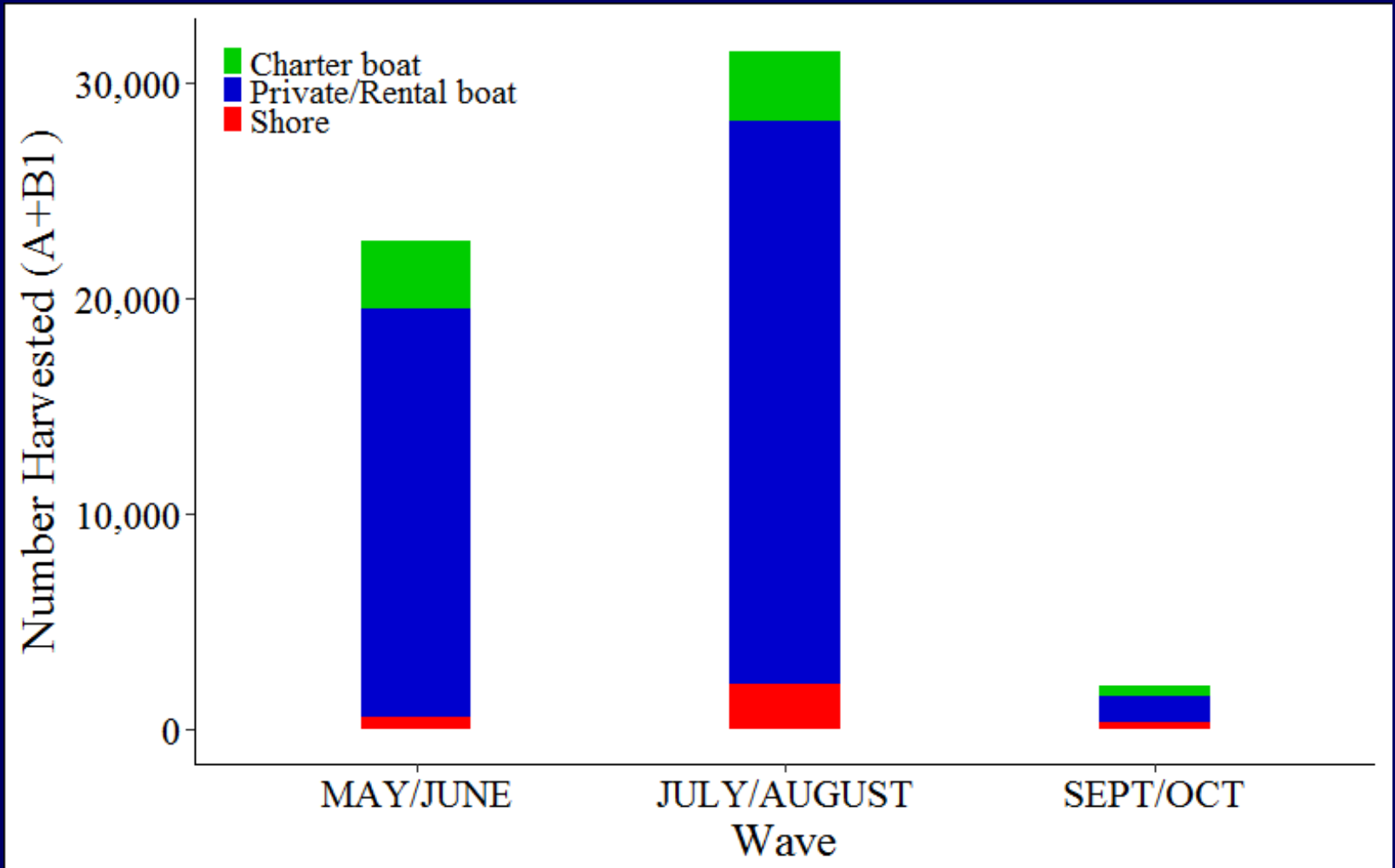


ASMFC Management of Summer Flounder

- 2017 coastwide recreational summer flounder harvest came in under target, therefore there is an allowance of a 17% increase in harvest to meet the 2018 RHL.
- Benchmark stock assessment taking place in 2018, RI has a member on that team.
 - Will look at multiple models, including sex specific.
- 17% does not give RI much to work with by way of liberalizing:
 - Already a long season.
 - Not enough for a minimum size decrease.
 - Bag limit can be adjusted.
- The bag limit was the controversial part of the last addendum, therefore it may make sense to gain that ground back.



2017 RI Recreational Summer Flounder Fishery Performance



- Note: Data only through wave 5



Recreational Summer Flounder 2018 Proposed Management Options

- No changes proposed for 2018

Current Management	Minimum size	Season	Possession Limit
	19"	May 1 – Dec. 31	4 fish





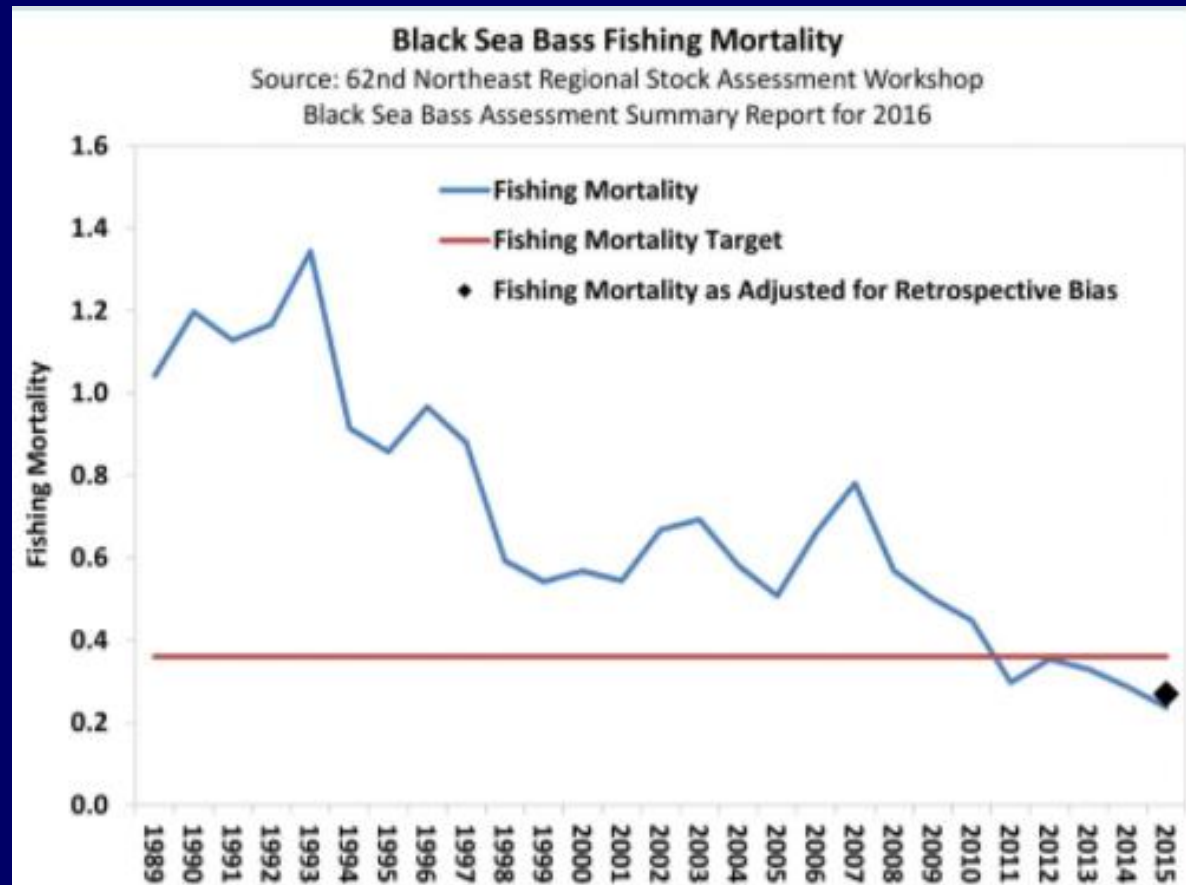
Black Sea Bass

- Summary of Stock Status
- ASMFC Management of Black Sea Bass
- 2017 Rhode Island Recreational Fishery Performance
- Recommendations/proposals for the 2018



Black Sea Bass Stock Status

- Data update in 2016.
- The black sea bass stock is not overfished, overfishing is not occurring relative to biological reference points.
- Fishing mortality was estimated to be 0.27 in 2015, below the threshold F reference point = 0.36



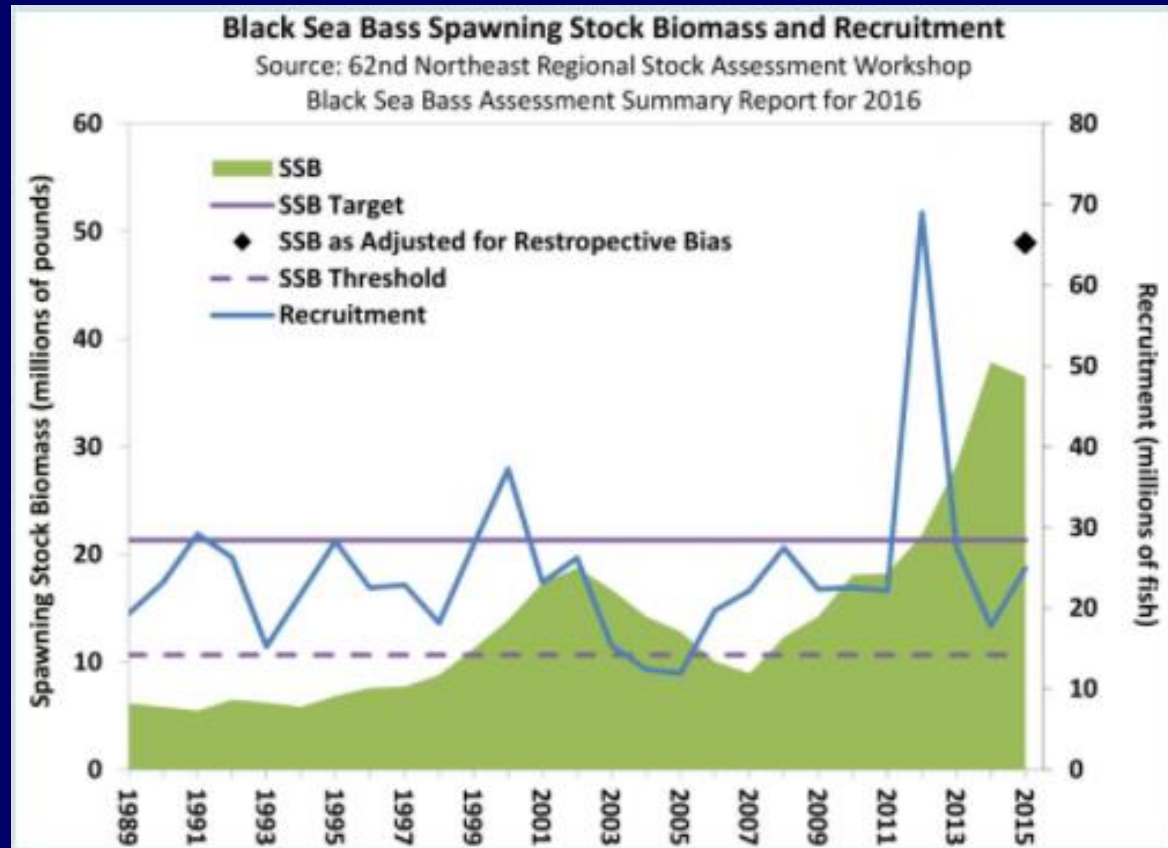
Black Sea Bass

- Stock Status cont'd:

- SSB estimated to be 48.9 m lbs in 2015, above the SSB reference point = 21.3 m lbs.

- The 2014 year class is currently estimated to be about 24.9 million fish, around average.

- Small decrease in quota expected in 2018.

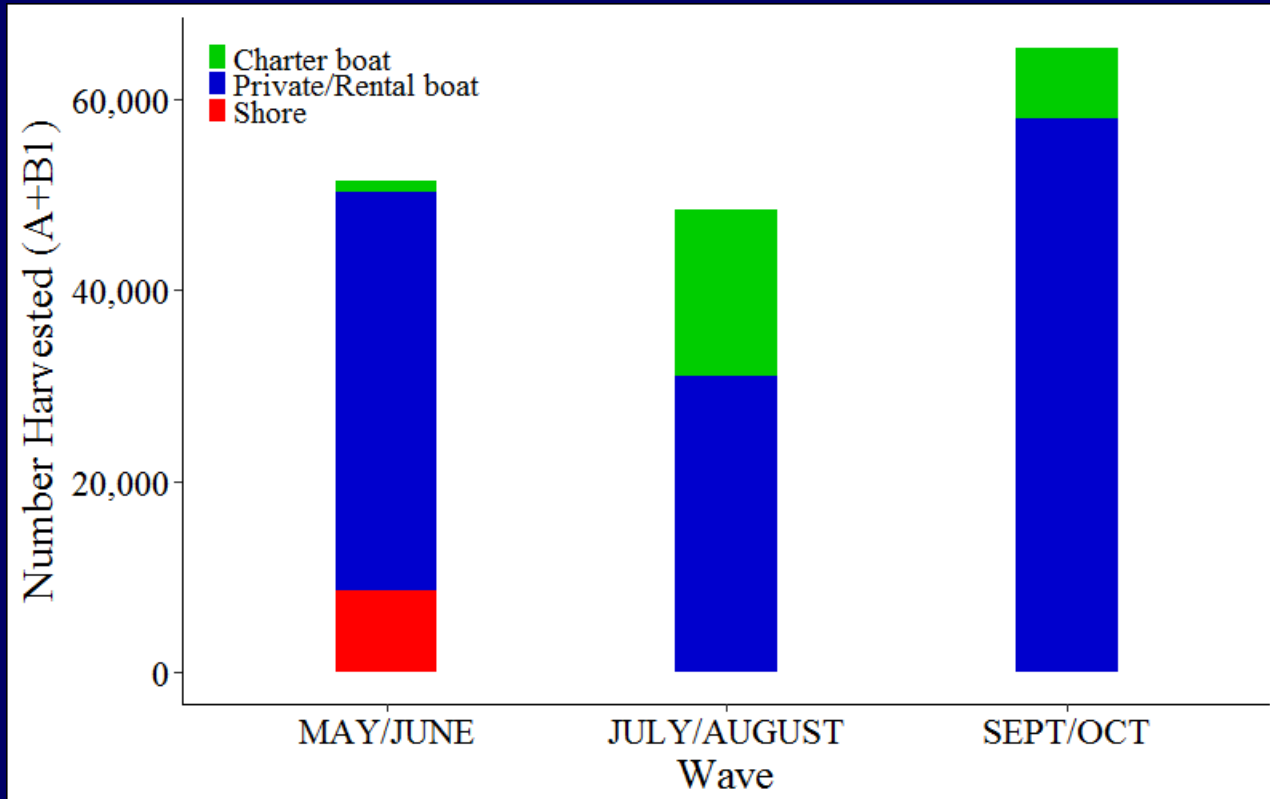


ASMFC Management of Black Sea Bass

- Addendum XXX out for public review:
 - RI hearing on January 17, 2017!
- There are numerous options with different configurations of regions and management units.
- Decisions will be made in February, there is no way to offer specific options for management at this point.
- We urge you to review the addendum and voice your support for the option you think is best for RI.
- It will also be helpful if you let us know your priorities as far as the most important measures to change.



2017 RI Recreational Black Sea Bass Fishery Performance



* Note: Data only through wave 5



Recreational Black Sea Bass 2018 Proposed Management Options

- No changes proposed for 2018

	Min. Size	Season	Possession Limit
Current Management	15"	5/25 – 8/31	3 fish
		9/1 – 9/21	7 fish
		9/22 – 10/21	Closed
		10/22 – 12/31	7 fish





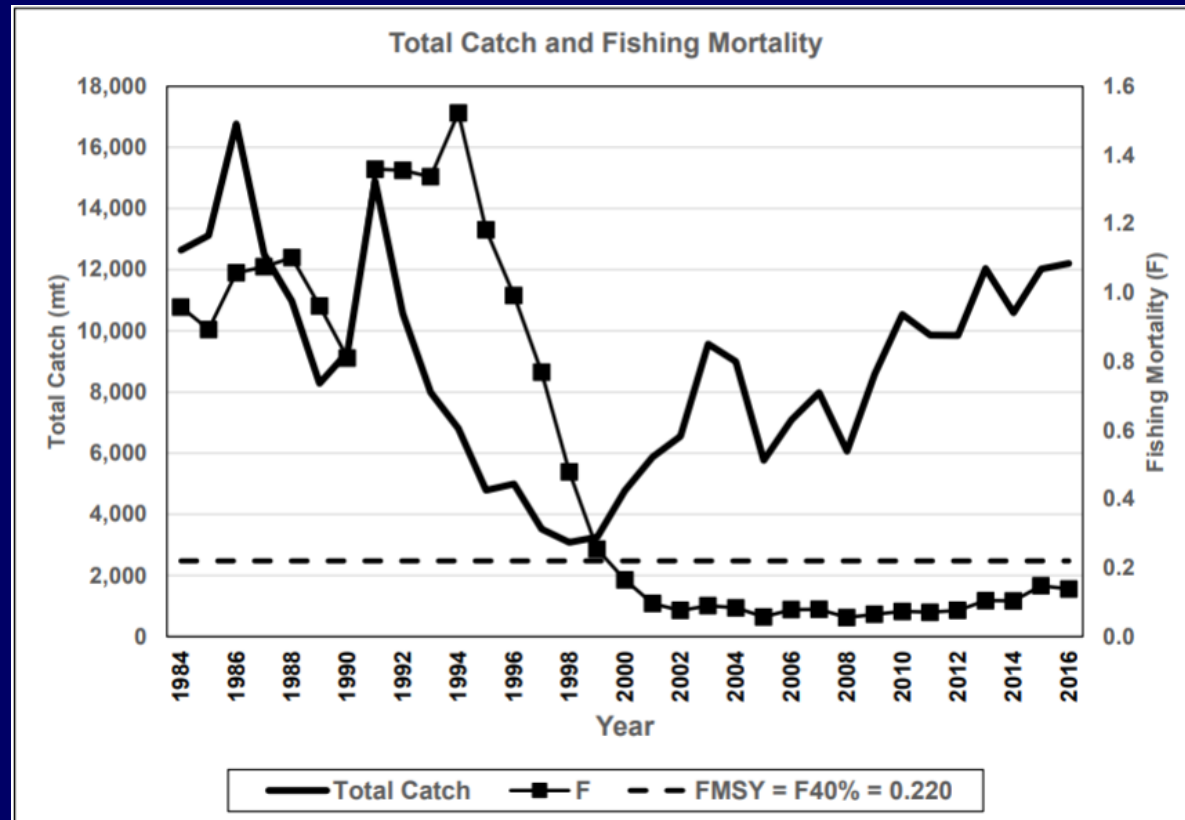
Scup

- Summary of Stock Status
- ASMFC Management of Scup
- 2017 Rhode Island Commercial Fishery Performance
- 2017 Rhode Island Recreational Fishery Performance
- Recommendations/proposals for 2018



Scup Stock Status

- Benchmark in 2015; data update in 2016.
- The scup stock is not overfished, overfishing is not occurring relative to biological reference points.
- Fishing mortality was estimated to be 0.139 in 2016, below the threshold F reference point = 0.22.



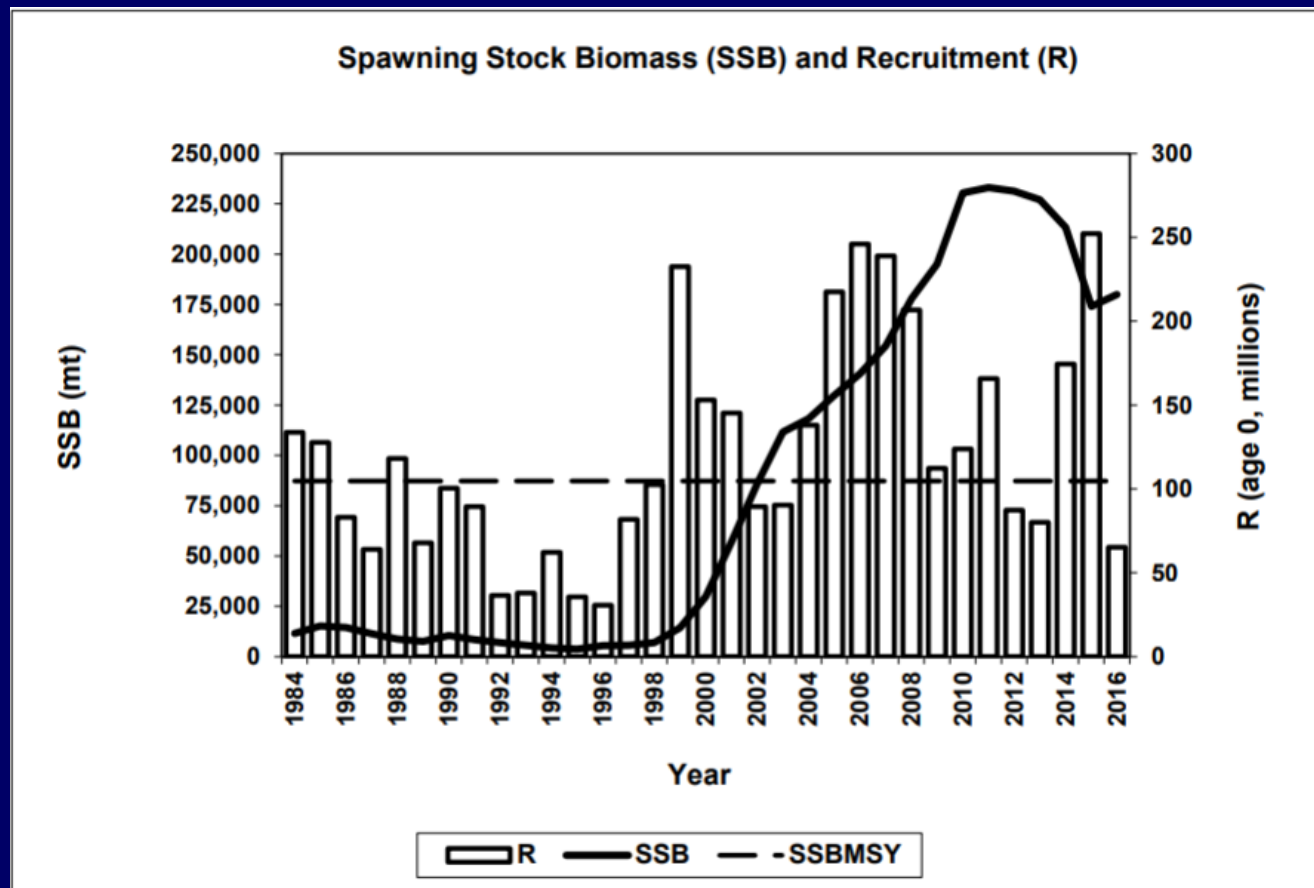
Scup

- Stock Status cont'd:

- SSB estimated to be 397 m lbs in 2016, above the SSB reference point = 192.47 m lbs and above the SSB threshold = 96.23 m lbs.

- The 2016 year class is currently estimated to be about 60 million fish, around average.

- Large increase in quota expected in 2018.



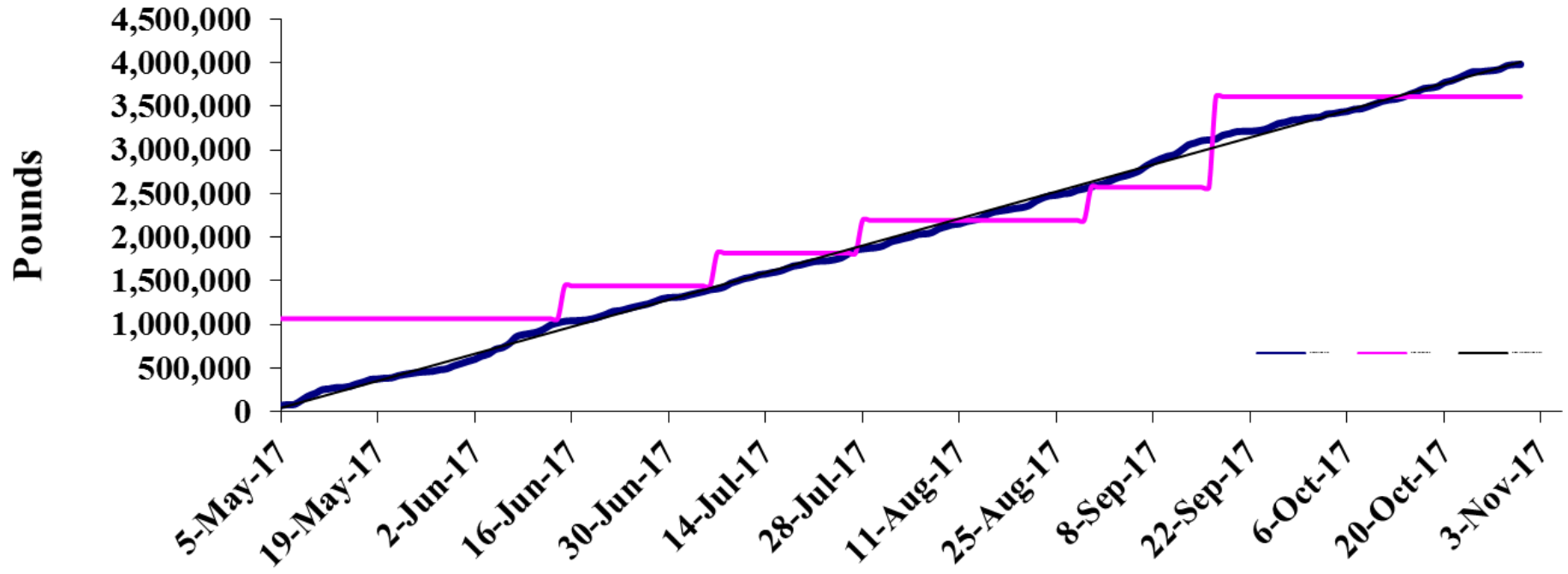
ASMFC Management of Scup

- Large increase in quota for 2018.
- Rec. harvest has been under target.
- No plans to change the federal rules at this point.
- Discussions ongoing with Northern Region colleagues on some potential liberalization in state waters:
 - Could try to match up with fed regs such as bag limit.
 - Would like some feedback on this.



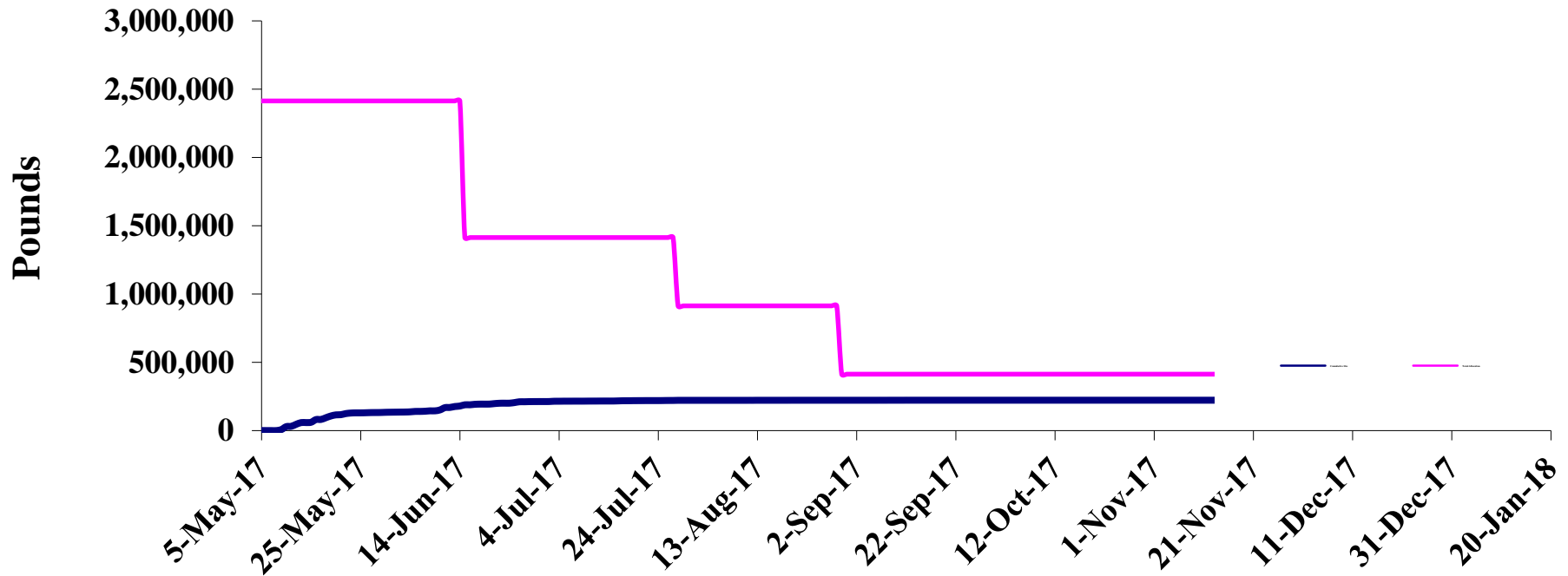
2017 RI Commercial Scup Fishery Performance

Scup General Category



2017 RI Commercial Scup Fishery Performance

Scup Floating Fish Trap



- Overage in general category partially offset by underage in FFT.
- Additionally, large increase in quota for 2018.



Commercial Scup 2018 Proposed Management Options

Option	Min. size	Seasons	Sub-periods	Quota		Starting Poss. limit
Option 1: FMP compliance with single summer sub-period	9"	Winter I: (1/1 – 4/30)		Coastwide		50,000 lbs/vsl/day
		Summer – Fall: (5/1 – 10/31 9/30)	Gen. Cat. Summer: (5/1 – 9/17 9/30)	40% of sub-period quota	2/3 of Gen. Cat. quota	10,000 lbs/vsl/wk
			Gen. Cat. Fall: (9/18 – 10/31)		1/3 of Gen. Cat. quota	
			FFT: (4/1 – 10/31 9/30)	60% of sub-period quota		Unlimited
		Winter II: (11/1 10/1 – 12/31)		Coastwide		2,000/ 18,000* lbs/vsl/day



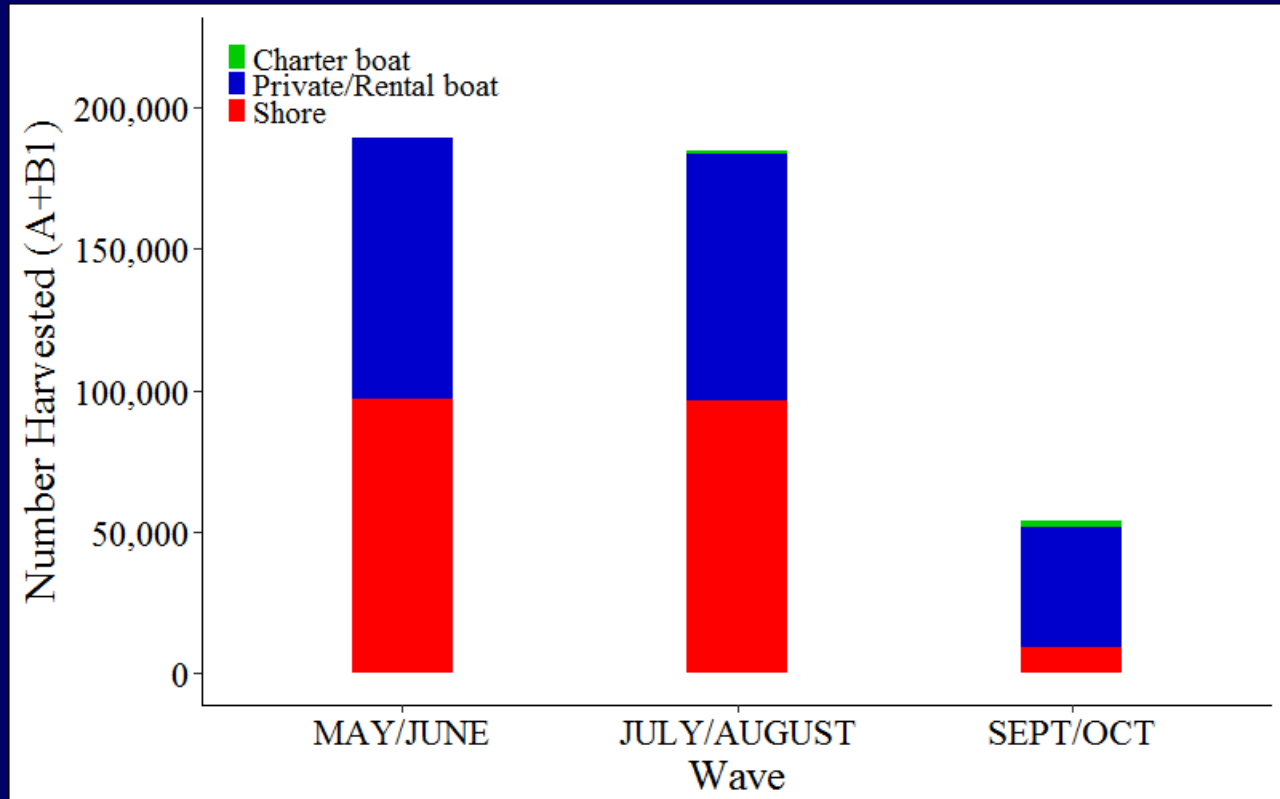
Commercial Scup 2018 Proposed Management Options cont'd:

Option 2: Option 1 plus removal of Scup as a Restricted species

- Would involve amendment to Licensing regulations to implement.
- As a licensing matter, will convene IAC to deliberate and offer a recommendation to the RI Marine Fisheries Council.



2017 RI Recreational Scup Fishery Performance



- Note:
Data only through wave 5



Recreational Scup 2018 Proposed Management Options

- No changes proposed for 2018

	Mode	Min. Size	Season/Possession Limit
Current Management	General Fishery	10"	<u>May 1 – Dec. 31: 30 fish</u>
	P/C	10"	<u>May 1 – Aug. 31: 30 fish</u> <u>Sept. 1 – Oct. 31: 45 fish</u> <u>Nov. 1 – Dec. 31: 30 fish</u>
	Special Shore	9"	<u>May 1 – Dec. 31: 30 fish</u>



Pilot Expanded Aggregate Program

- Expanded aggregate opportunities have been proposed for multiple years.
- One criticism has been lack data to determine impacts.
- Propose setting up a pilot with multiple gear types to gather data on impacts.
- Pilot will require application and will have rigorous reporting requirements and vessel monitoring.
- Proposing to keep it to 10 – 15 vessels, will have a diversity of gear types and need applicants to have a fishing history so that comparisons can be made.
- Proposing for black sea bass initially, but could expand for fluke as well.





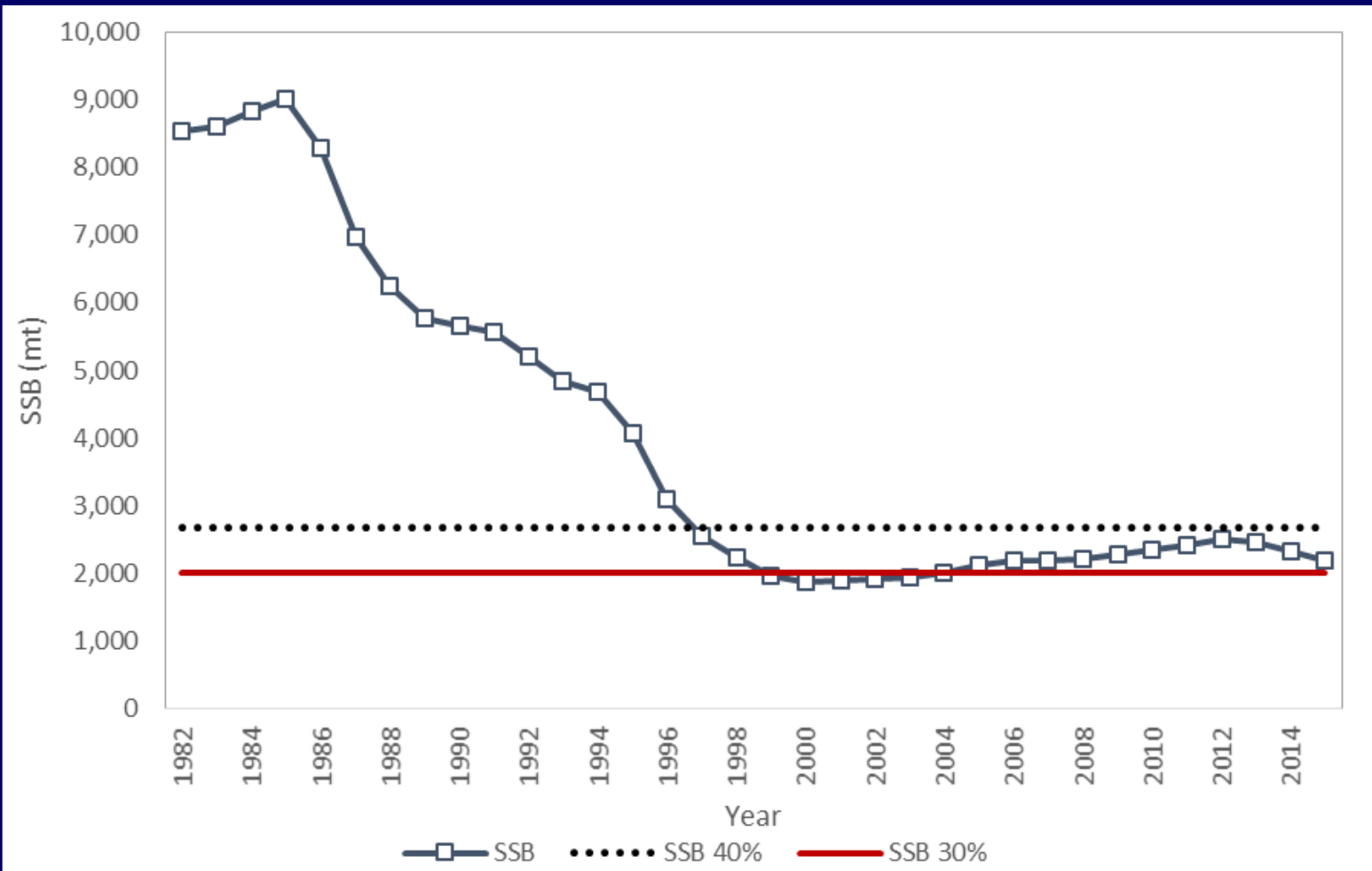
Tautog

- Summary of Stock Status
- ASMFC Management of Scup
- 2017 Rhode Island Commercial Fishery Performance
- 2017 Rhode Island Recreational Fishery Performance
- Recommendations/ proposals for 2018



Tautog Stock Status

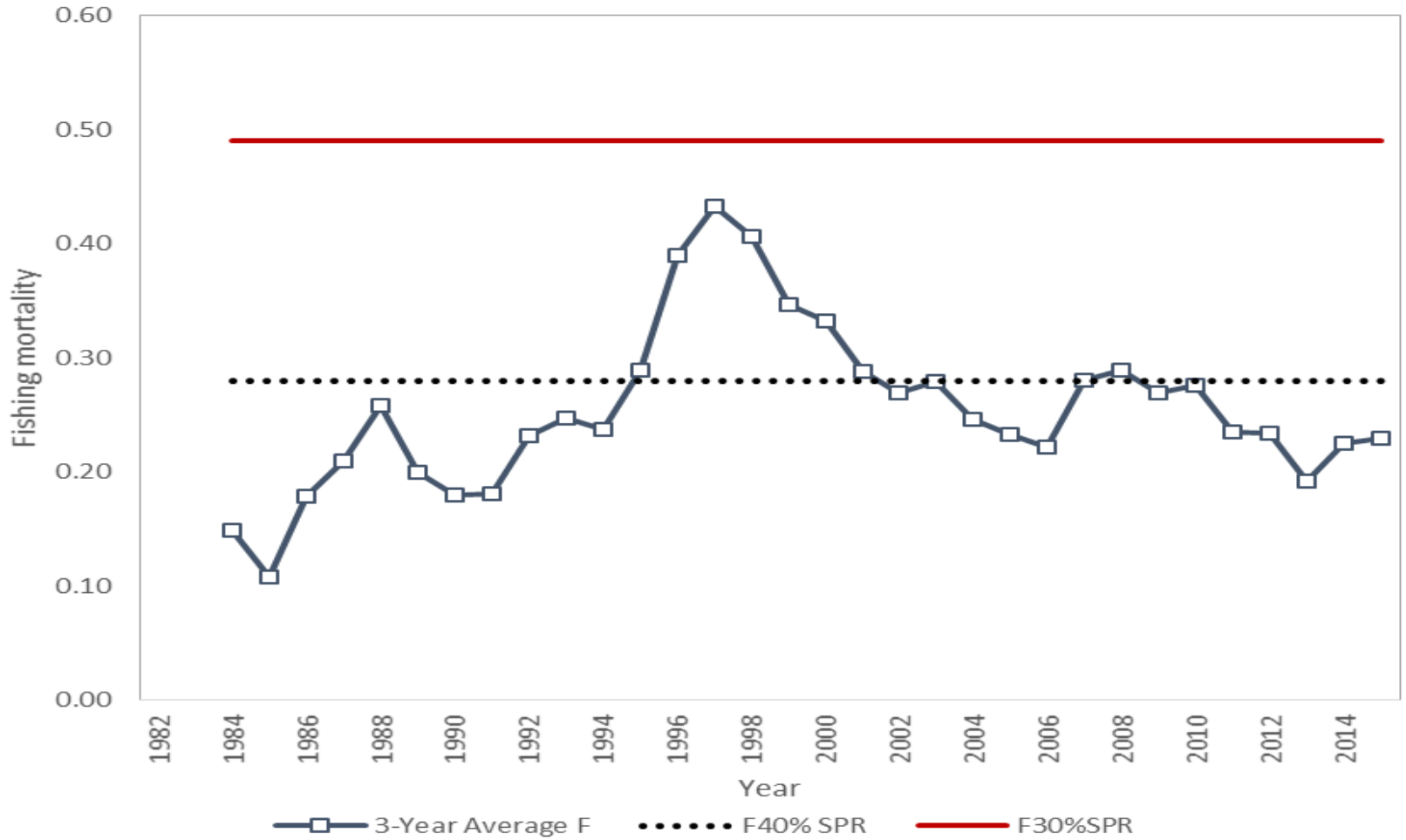
- SPR Reference Points approved
- **SSB estimated at 2,196mt (target 2,684 threshold 2,004)**



Tautog

Stock Status cont'd:

- F estimated at 0.23 (target 0.28 threshold 0.49)

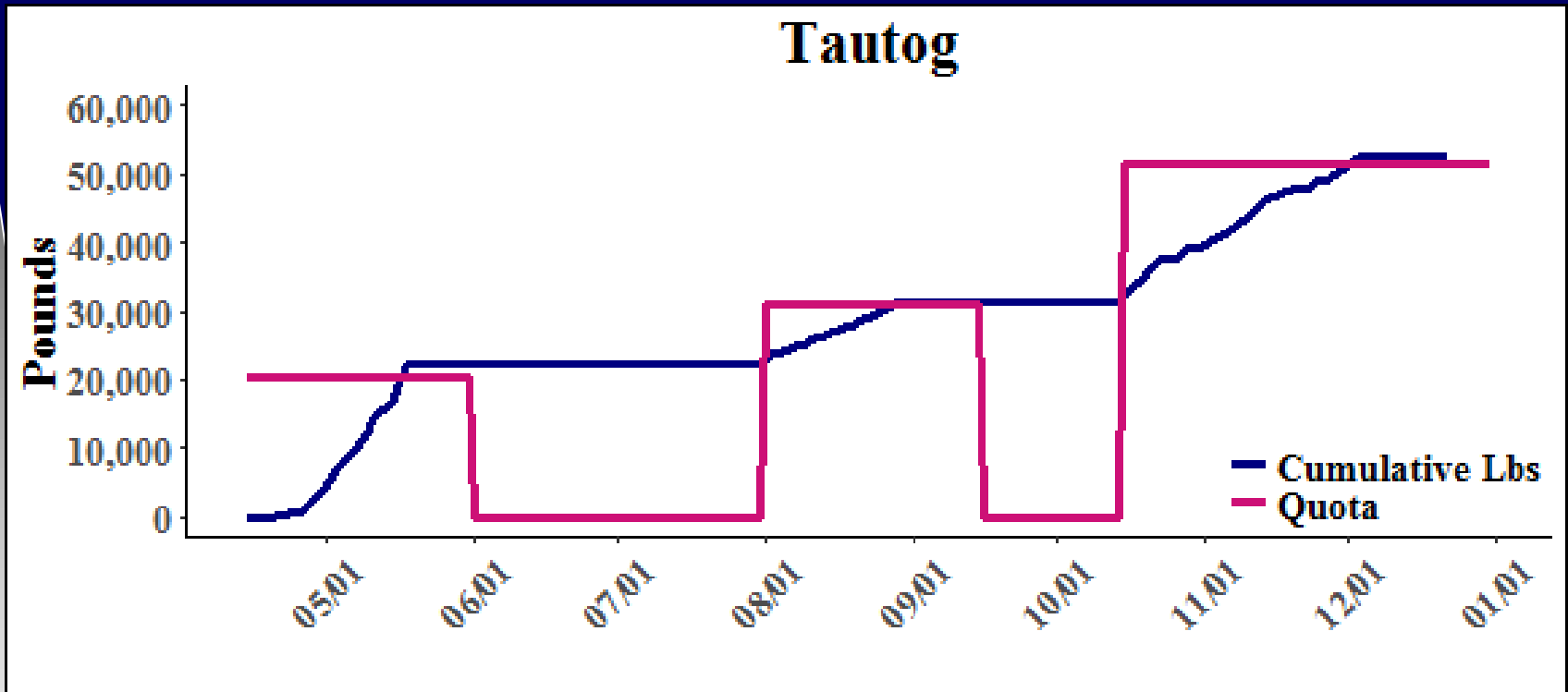


ASMFC Management of Tautog

- Benchmark assessment completed in 2014 with an update in 2016.
- A regional approach presented in the update was accepted by the board, RI is in a region with Massachusetts (MARI).
- Amendment 1 was passed in August 2017:
 - Changes in recreational management.
 - Commercial tagging by the harvester (not active in 2018).
- Anticipated RI 2017 Commercial Quota: 51,348 lbs



2017 RI Commercial Tautog Fishery Performance



- Total overage 1,460 lbs.
 - Spring: 20,539 lbs
 - Summer: 10,270 lbs
 - Fall: 20,539 lbs

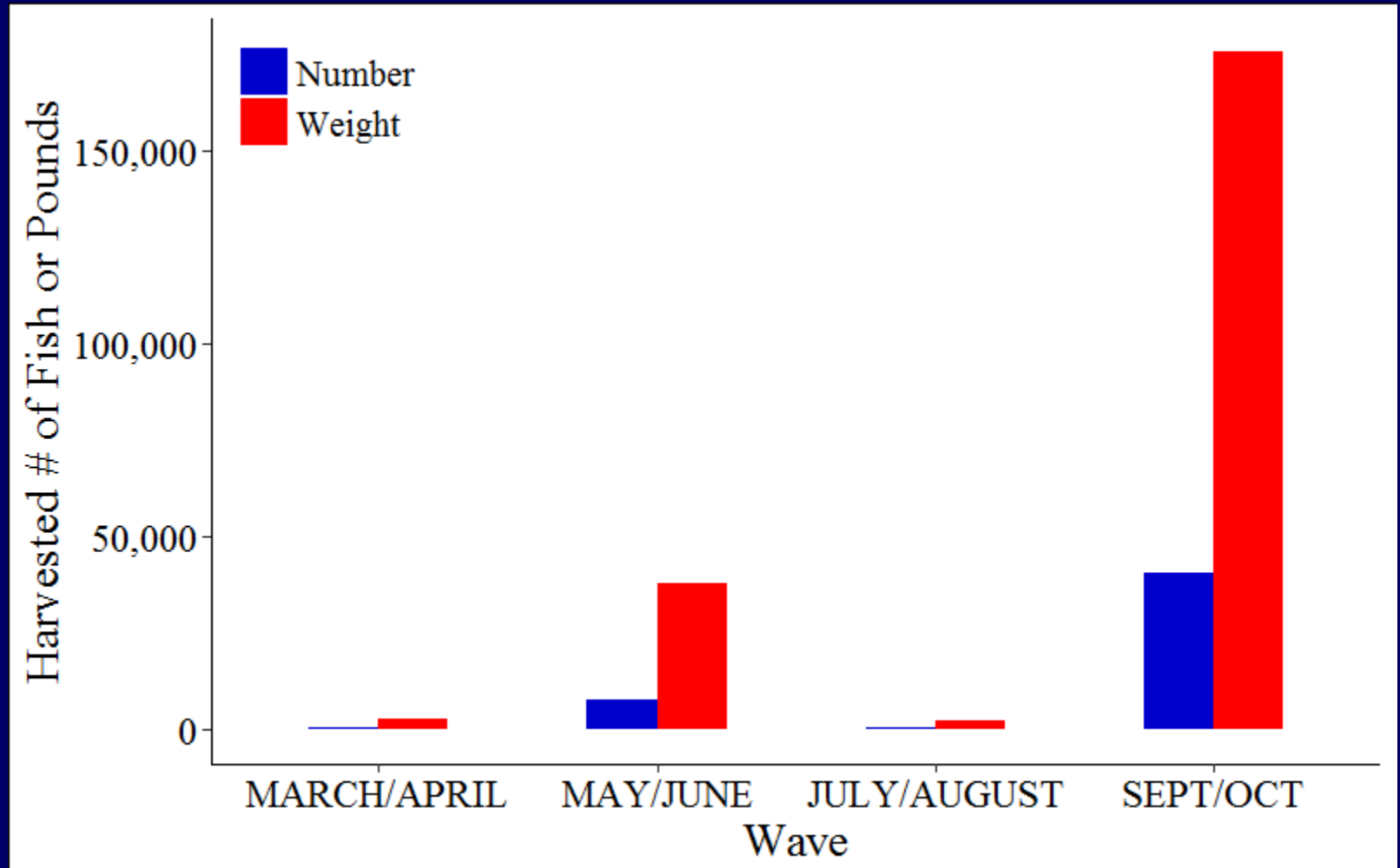


Commercial Tautog 2018 Proposed Management Options

Option	Min. Size	Season	Allocation	Possession Limit
<u>Option 1:</u> Status Quo	16"	April 15 – May 31	40%	10 fish/vsl/day
		June 1 – July 31		Closed
		Aug. 1 – Sept. 15	20%	10 fish/vsl/day
		Oct. 15 – Dec. 31	40%	10 fish/vsl/day
<u>Option 2:</u> Earlier Spring opening	16"	April 15 <u>1</u> – May 31	40%	10 fish/vsl/day
		June 1 – July 31		Closed
		Aug. 1 – Sept. 15	20%	10 fish/vsl/day
		Oct. 15 – Dec. 31	40%	10 fish/vsl/day



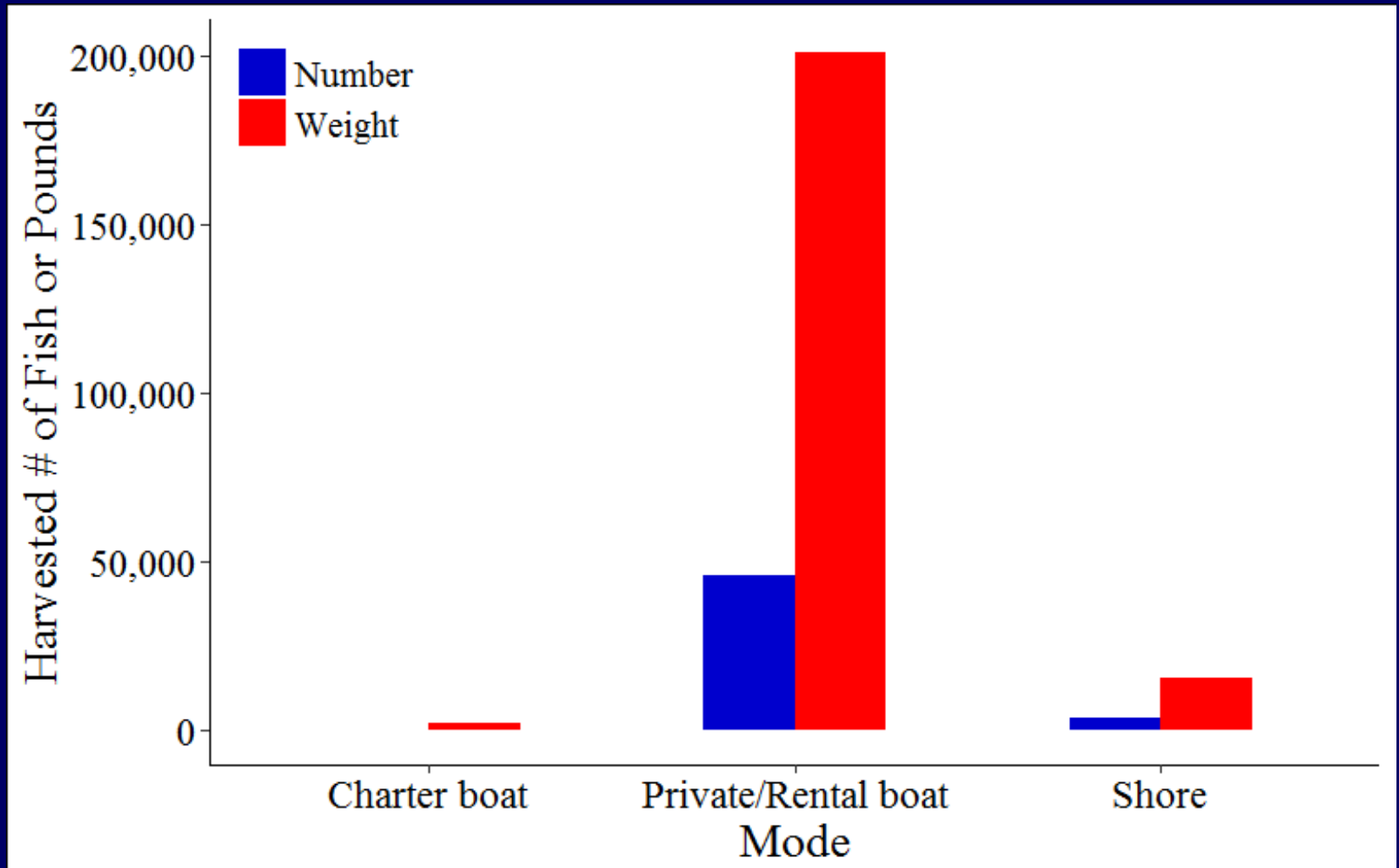
2017 RI Recreational Tautog Fishery Performance



- **Note:** Data only through wave 5



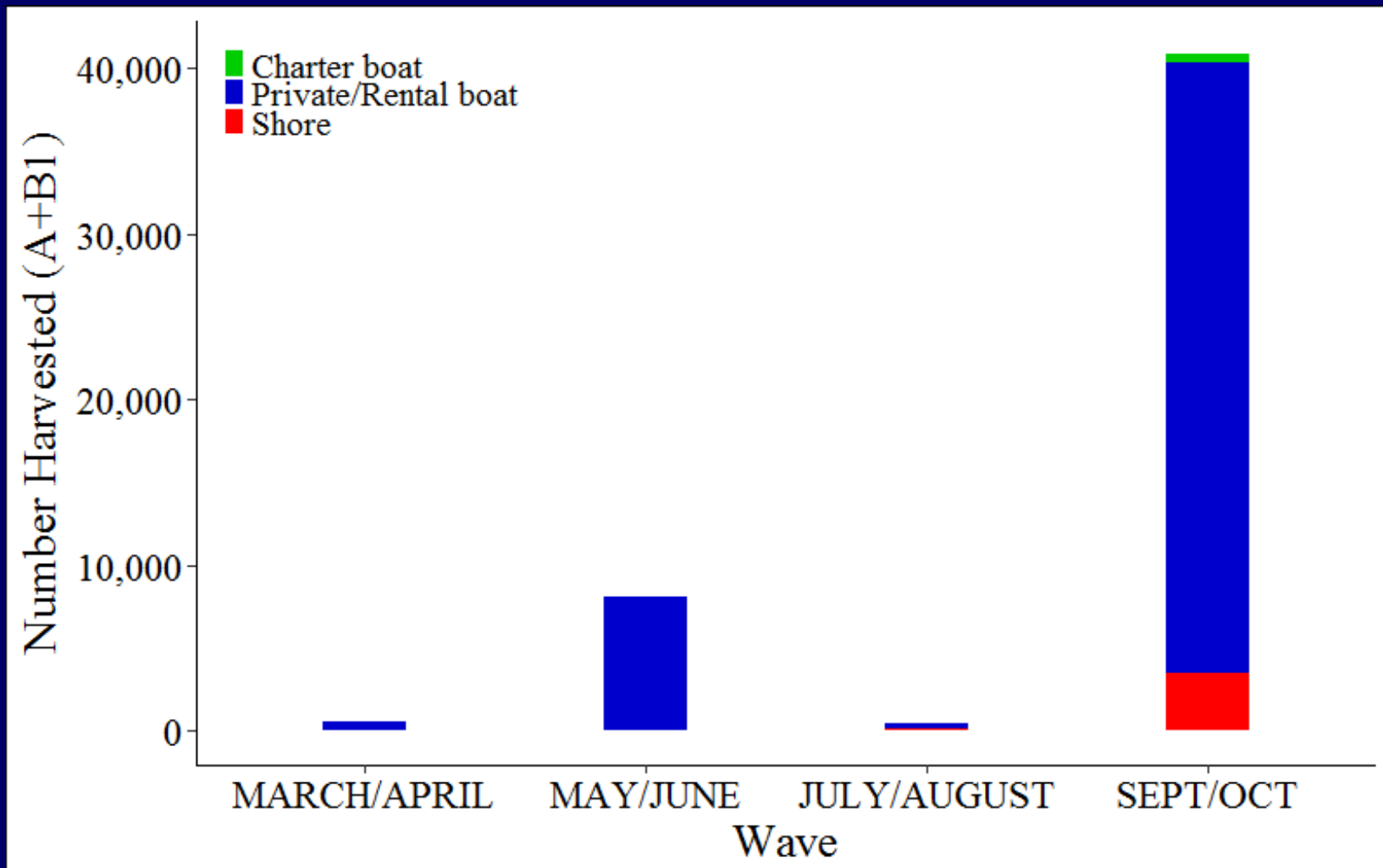
2017 RI Recreational Tautog Fishery Performance



- **Note:** Data only through wave 5



2017 RI Recreational Tautog Fishery Performance



- **Note:** Data only through wave 5



Recreational Tautog 2018 Proposed Management Options

Option	Min. Size	Rec. and P/C Season	Poss. Limit
<u>Option 1:</u> Status Quo	16"	April 15 – May 31:	3 fish/person/day*
		June 1 – July 31:	Closed
		Aug. 1 – 3 rd Sat. in Oct:	3 fish/person/day*
		3 rd Sat. in Oct. – Dec. 15:	6 fish/person/day* * max. 10 fish/vessel (n/a for P/C)
<u>Option 2:</u> Earlier Spring opening	16"	April 15 1 – May 31:	3 fish/person/day*
		June 1 – July 31:	Closed
		Aug. 1 – 3 rd Sat. in Oct:	3 fish/person/day*
		3 rd Sat. in Oct. – Dec. 15:	6 5 fish/person/day* * max. 10 fish/vessel (n/a for P/C)





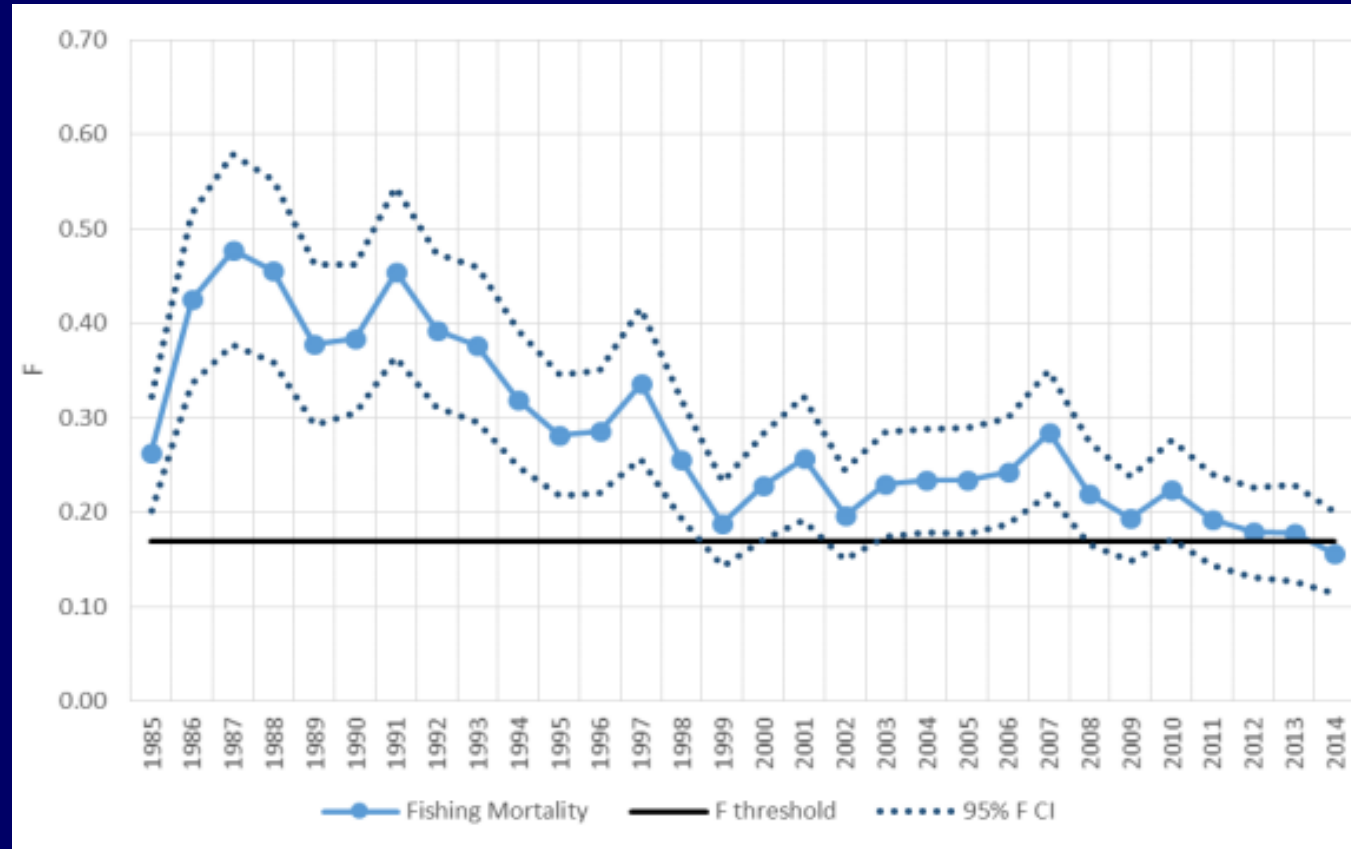
Bluefish

- Summary of Stock Status
- **ASMFC Management of Bluefish**
- 2017 Rhode Island Commercial Fishery Performance
- **2017 Rhode Island Recreational Fishery Performance**
- Recommendations/proposals for 2018



Bluefish Stock Status

- Benchmark in 2015.
- The bluefish stock is not overfished, and overfishing is not occurring relative to biological reference points.
- Fishing mortality was estimated to be 0.157 in 2014, below the threshold F reference point = 0.19.



Bluefish

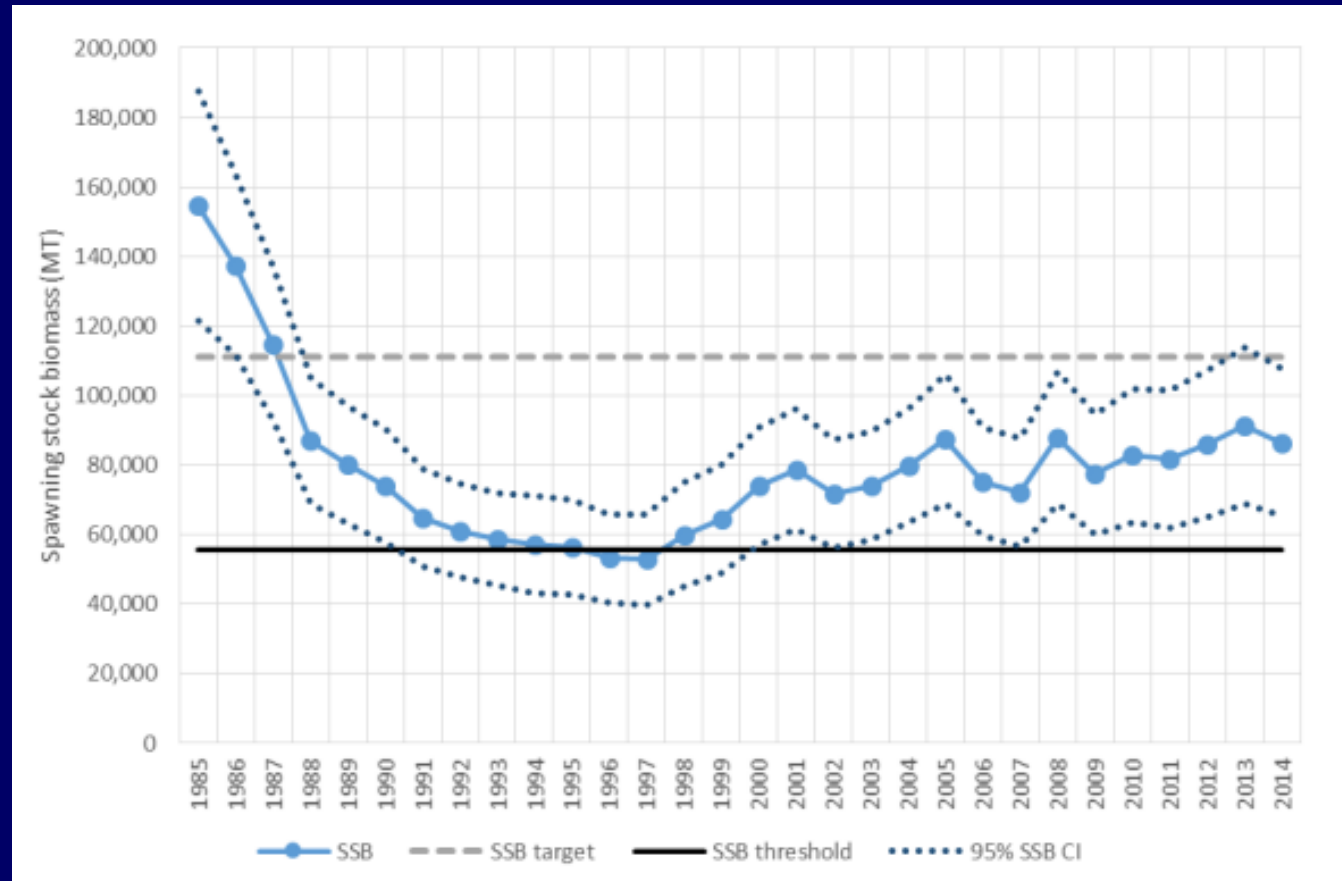
- Stock Status cont'd:

- Biomass estimated to be 207.96 m lbs in 2014, above the Biomass threshold = 162.1 m lbs, but below the Biomass target of 324.19 m lbs.

- The 2014 year class is currently estimated to be approx. 29.6 million fish, above the median.

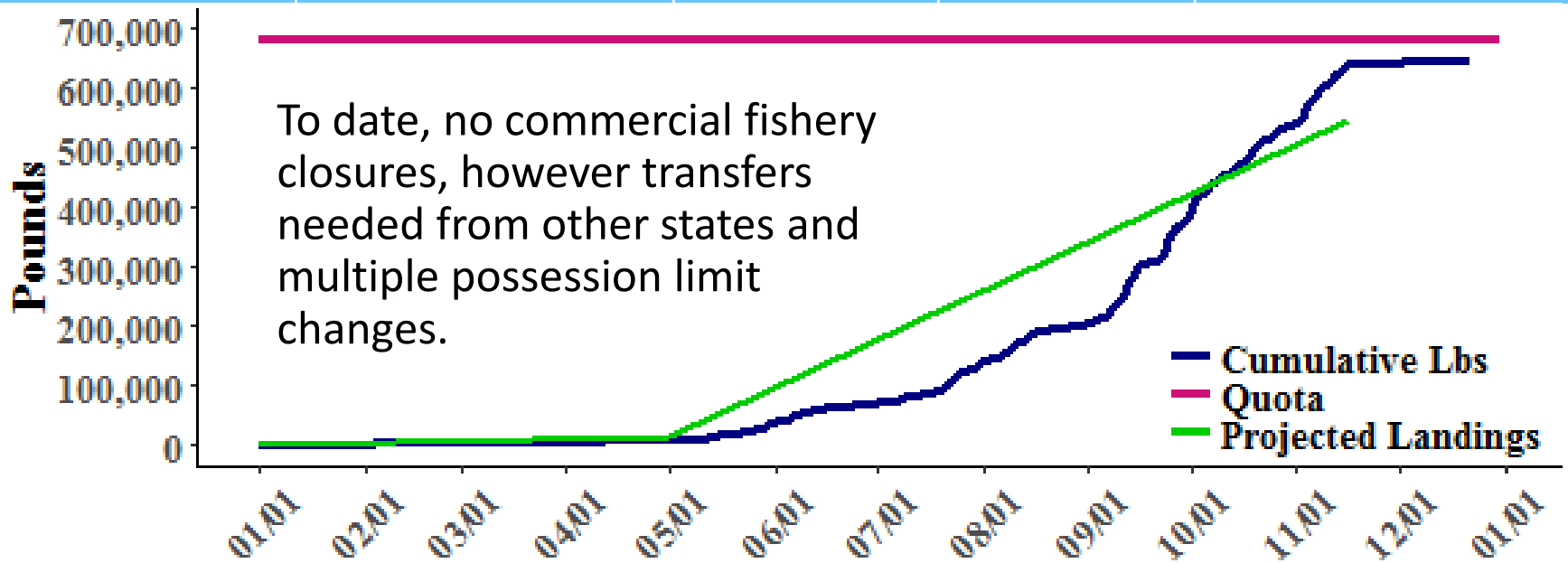
- 2018 Commercial Quota:

493,160 lbs
(increase of ~ 19% from 2017 initial quota)



RI Commercial Bluefish Fishery Performance

Sub-period	2017 Initial Projected Poundage	Transfers	2017 Landings	Possession Limit
1/1 – 4/30	17,154		11,315	500 lbs/vsl/wk (1/1); 250 lbs/vsl/wk (3/5); 500 lbs/vsl/wk (3/26); 750 lbs/vsl/wk (4/16)
5/1 – 11/11	529,585	150,338	625,665	6,000 lbs/vsl/wk (5/1); 10,000 lbs/vsl/wk (5/28); 15,000 lbs/vsl/wk (7/30)
11/12 – 12/31	34,824		9,335	15,000 lbs/vsl/wk (11/12); 10,000 lbs/vsl/wk (11/19); 15,000 lbs/vsl/wk (12/3)
TOTAL	581,563	150,338	646,315	



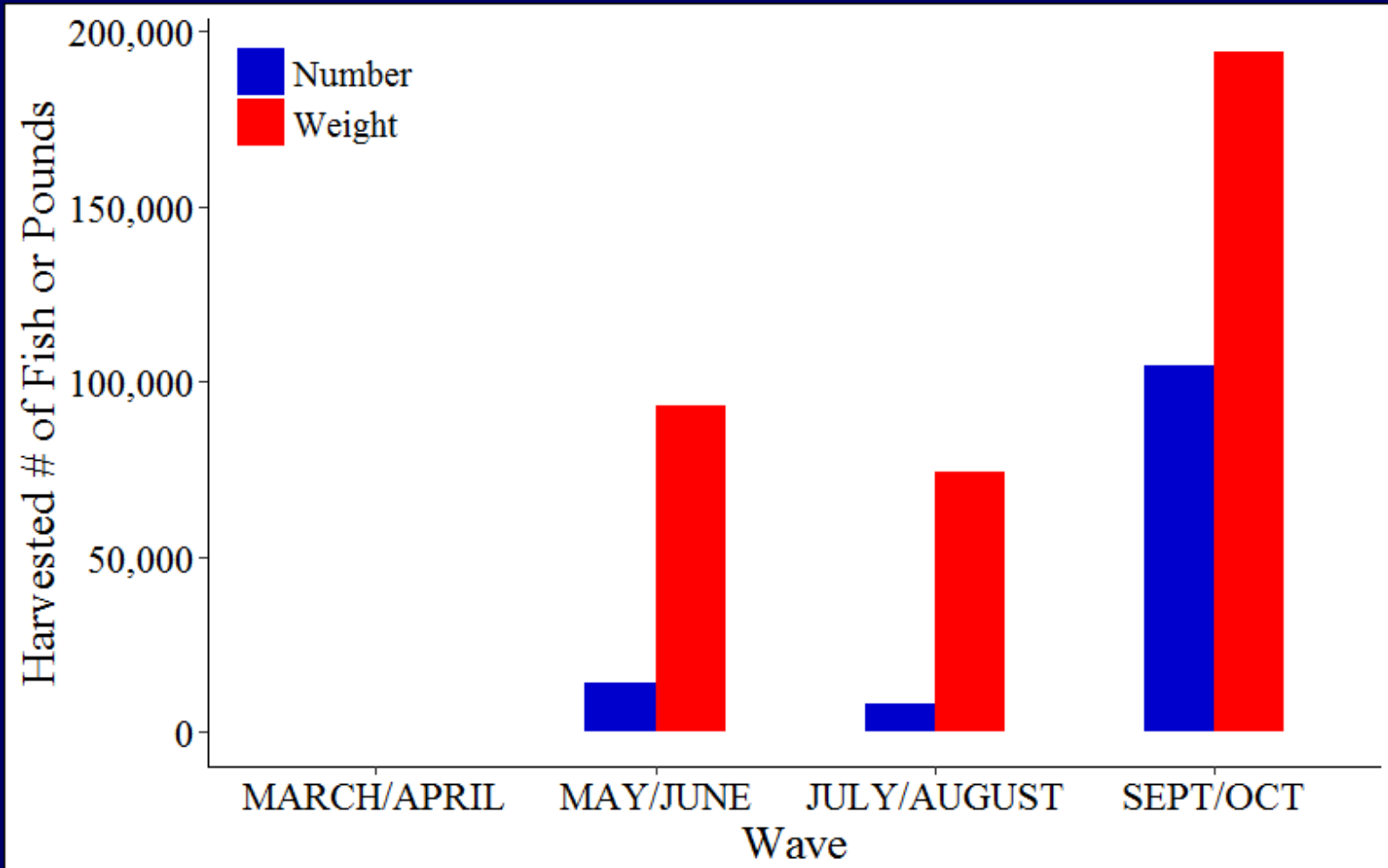
Commercial Bluefish

2018 Proposed Management Options

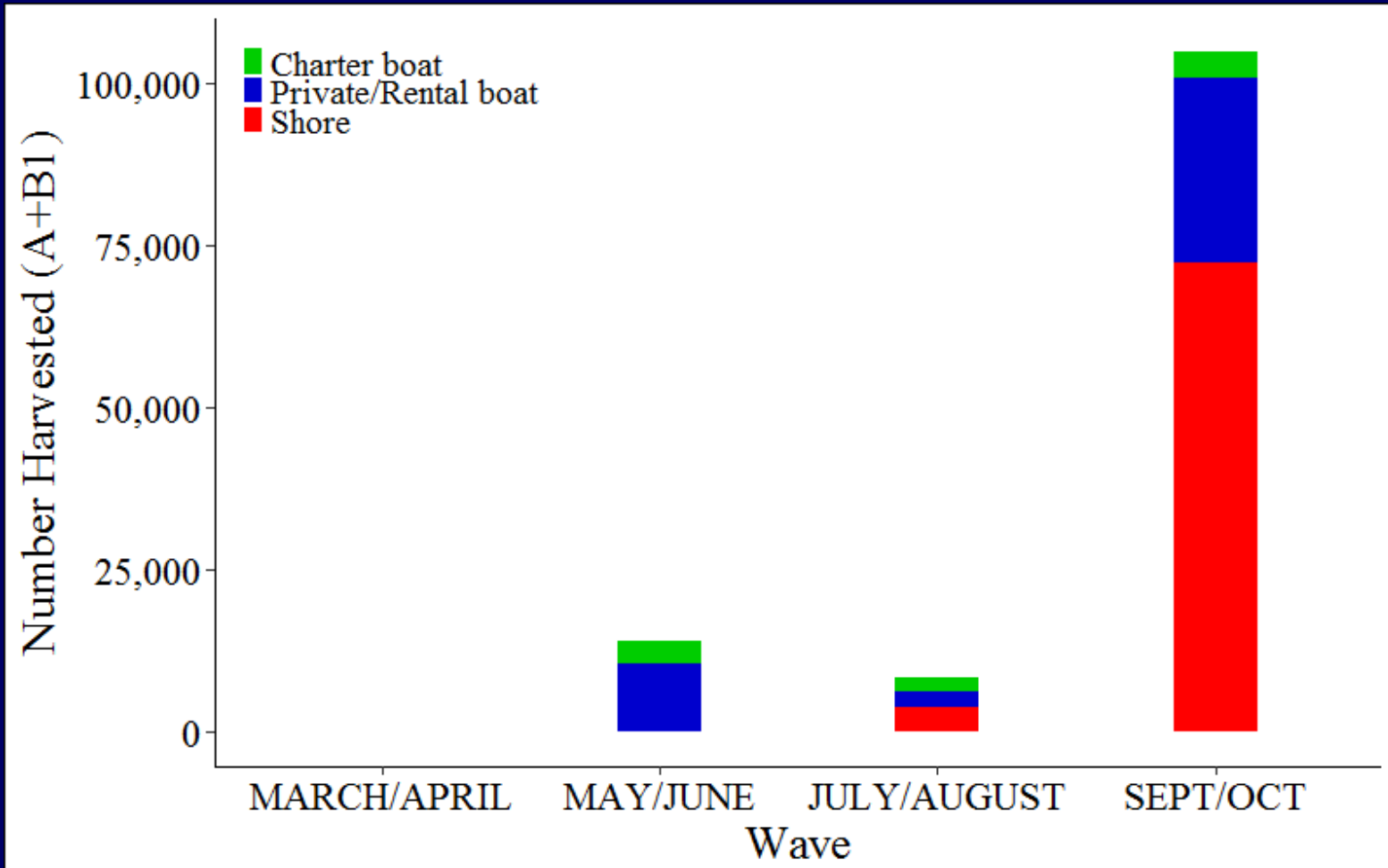
Option	Min. size	Sub-period	Poss. Limit	2018 Projected Poundage
<u>Option 1:</u> Status Quo	12"	1/1 – 4/30	500 lbs/vsl/wk	11,361
		5/1 – 11/11	6,000 lbs/vsl/wk	464,141
		11/12 – 12/31	500 lbs/vsl/wk	12,380
<u>Option 2:</u> Earlier Fall Start Date	12"	1/1 – 4/30	500 lbs/vsl/wk	11,361
		5/1 – 11/ 14 <u>10</u>	6,000 lbs/vsl/wk	464,141
		11/ 12 <u>11</u> – 12/31	500 lbs/vsl/wk	12,380
<u>Industry Proposal:</u> 2 Week Aggregate in Sub-Period 1	12"	1/1 – 4/30	500 <u>1,000</u> lbs/vsl/ <u>2 wks</u>	15,361
		5/1 – 11/11	6,000 lbs/vsl/wk	464,141
		11/12 – 12/31	500 lbs/vsl/wk	12,380



RI Recreational Bluefish



RI Recreational Bluefish



Recreational Bluefish 2018 Proposed Management Options

- No changes proposed for 2018

Current Management	Min. size	Sub-period	Poss. Limit
	No min. size	1/1 – 12/31	15 fish





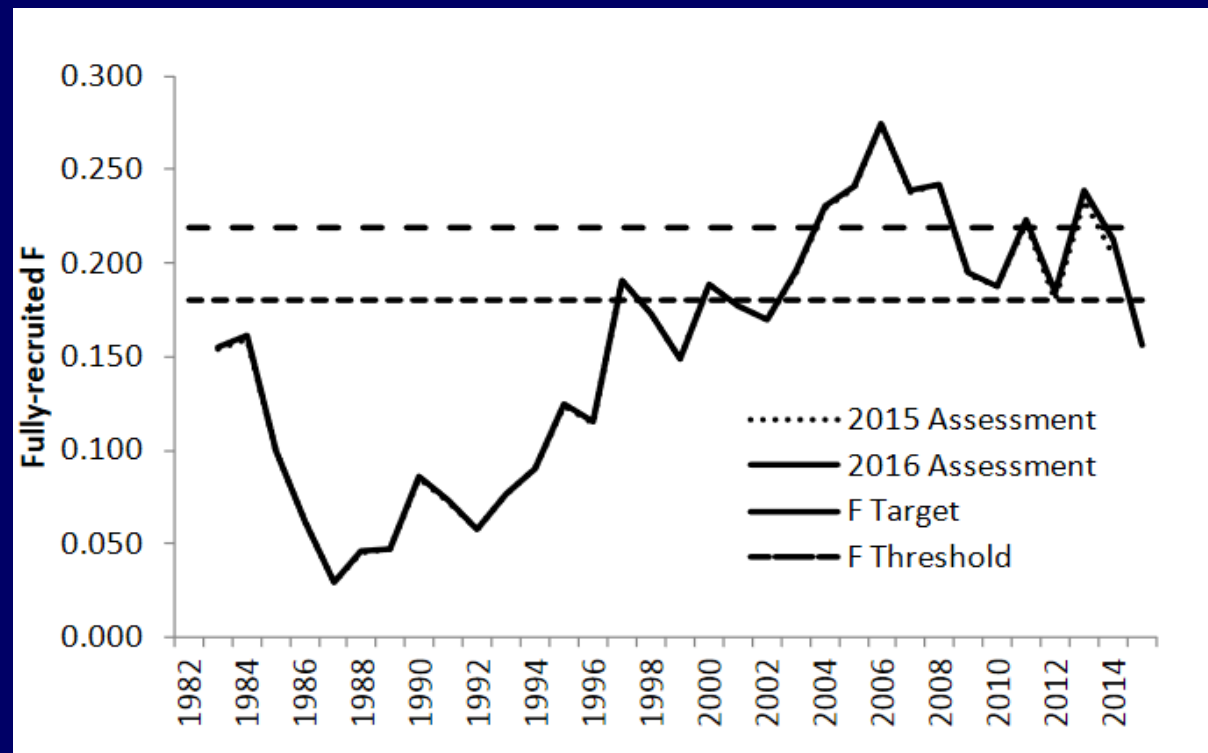
Striped Bass

- Summary of Stock Status
- **ASMFC Management of Striped Bass**
- 2017 Rhode Island Commercial Fishery Performance
- **2017 Rhode Island Recreational Fishery Performance**
- Recommendations/proposals for 2018



Striped Bass Stock Status

- Update in 2016: Based on SAW/SARC 57 and peer review, the striped bass stock is not overfished and overfishing is not occurring relative to biological reference points.
- **Benchmark stock assessment underway, to be peer reviewed in Fall 2018.**
- Fishing mortality was estimated to be 0.16 in 2015, a value below both the fishing mortality threshold (0.22) and the fishing mortality target (0.18).

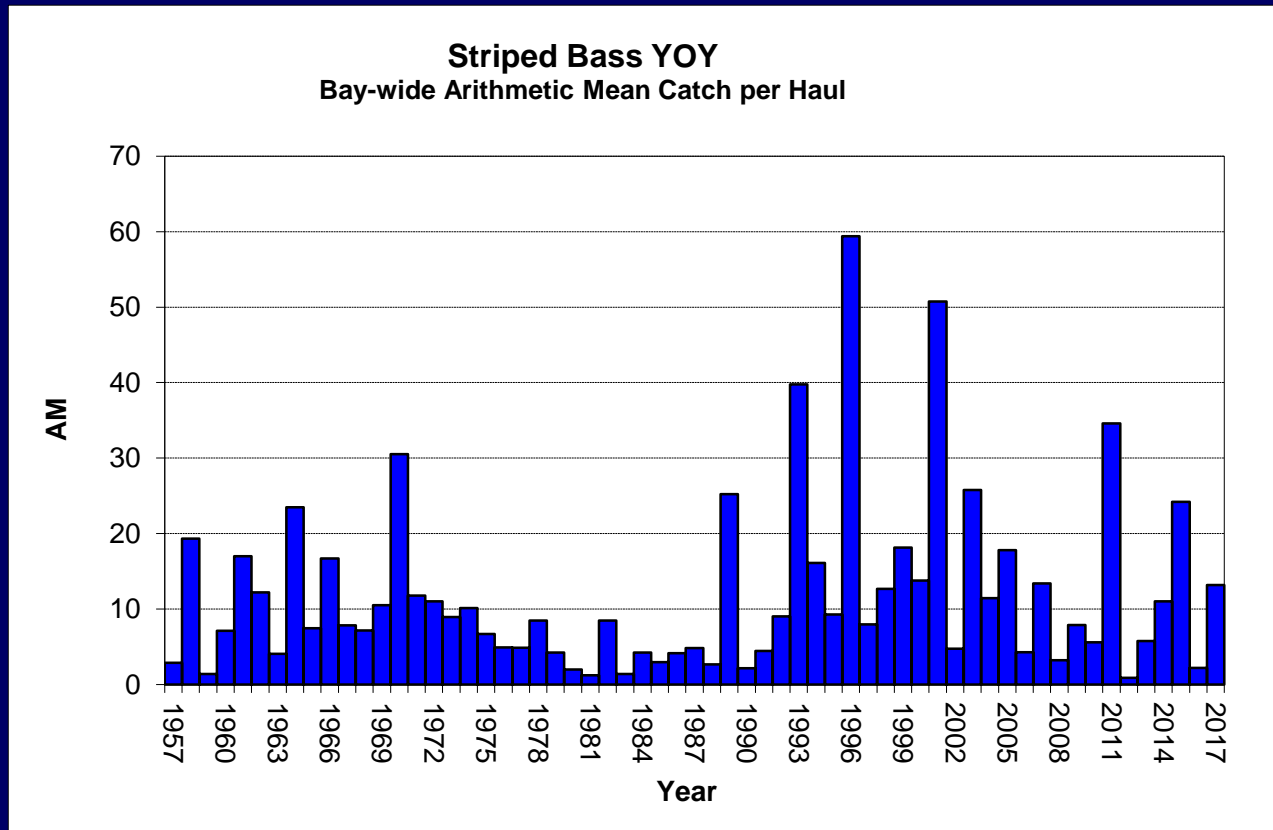


Source: 2016 Update of the Striped Bass Stock Assessment (Figure 14)



Striped Bass

- Stock Status cont'd:
- SSB was estimated to be 129 million pounds in 2015, just above the threshold but below the target (127 million and 159 million respectively).
- In 2015 high recruitment and a strong year class were observed.
- In 2017 the MD YOY survey indicated a high abundance relative to 2016.



ASMFC Management of Striped Bass

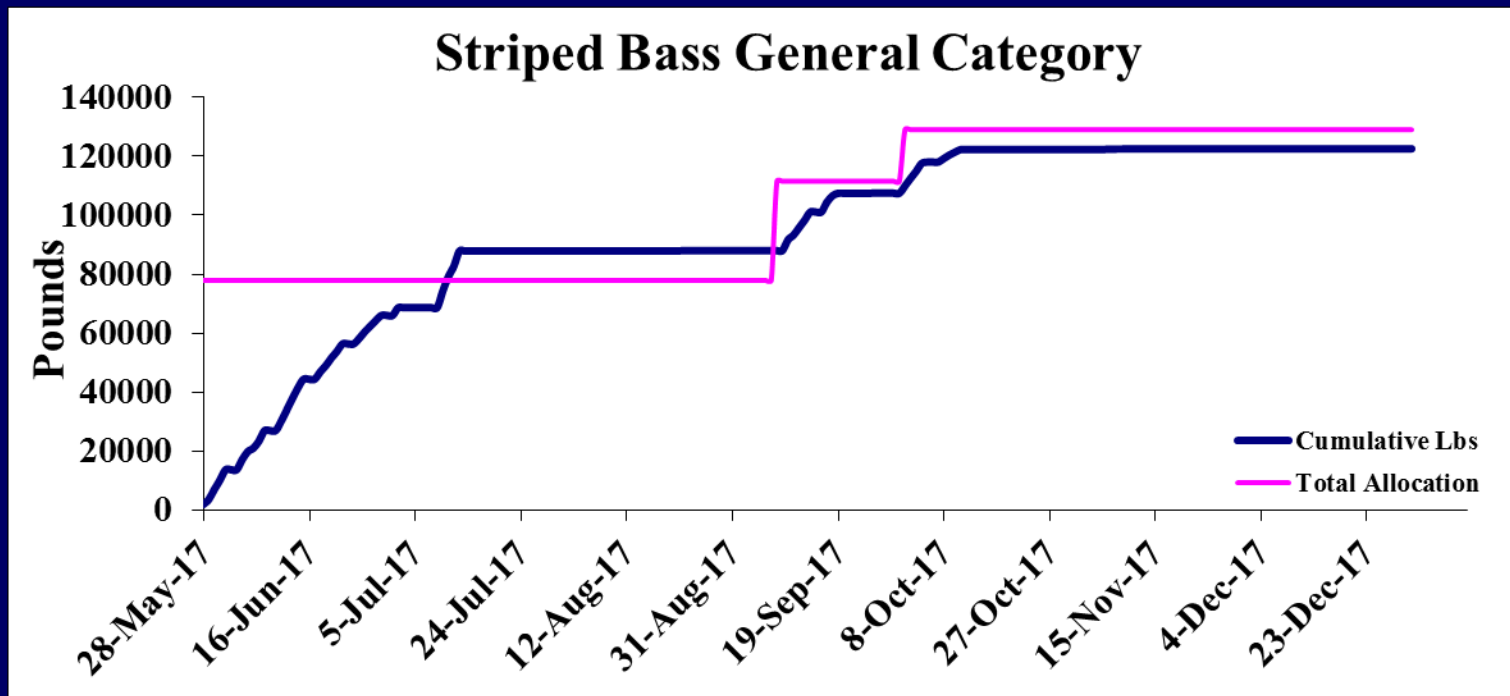
- Addendum IV implemented in 2015.
- RI implemented:
 - Rec: 1 fish at 28" min.
 - Comm. GC: 25 % quota reduction – 111,459 lbs
 - Comm. FFT: 25% quota reduction w/ CE – 70,113 lbs
- Draft Addendum V initiated in February 2017:
 - Withdrawn in May 2017 pending the outcome of the 2018 benchmark stock assessment.
- Addendum IV management options to remain in effect in 2018.



2017 RI Commercial Striped Bass Fishery Performance - General Category

- Quota: Initial - 111,457 lbs; after rollover – 128,840 lbs.
- 6,283 lb underage in 2017.

Season	Days Open	Initial Allocation	Trap Rollover	Final Allocation	Landings
5/28 – 7/2; 7/10-7/13	29	78,020 lbs	N/A	78,020 lbs	87,957 lbs
9/10 – 9/19; 10/1 – 10/11; 11/5 – 12/31	58	33,437 lbs	17,383 lbs	40,883 lbs	34,600 lbs



Commercial General Category Striped Bass 2018 Proposed Management Options

- RI 2018 Commercial Quota = 182,719 lbs:
 - General Category: 111,459 lbs
 - Floating Fish Trap: 69,992

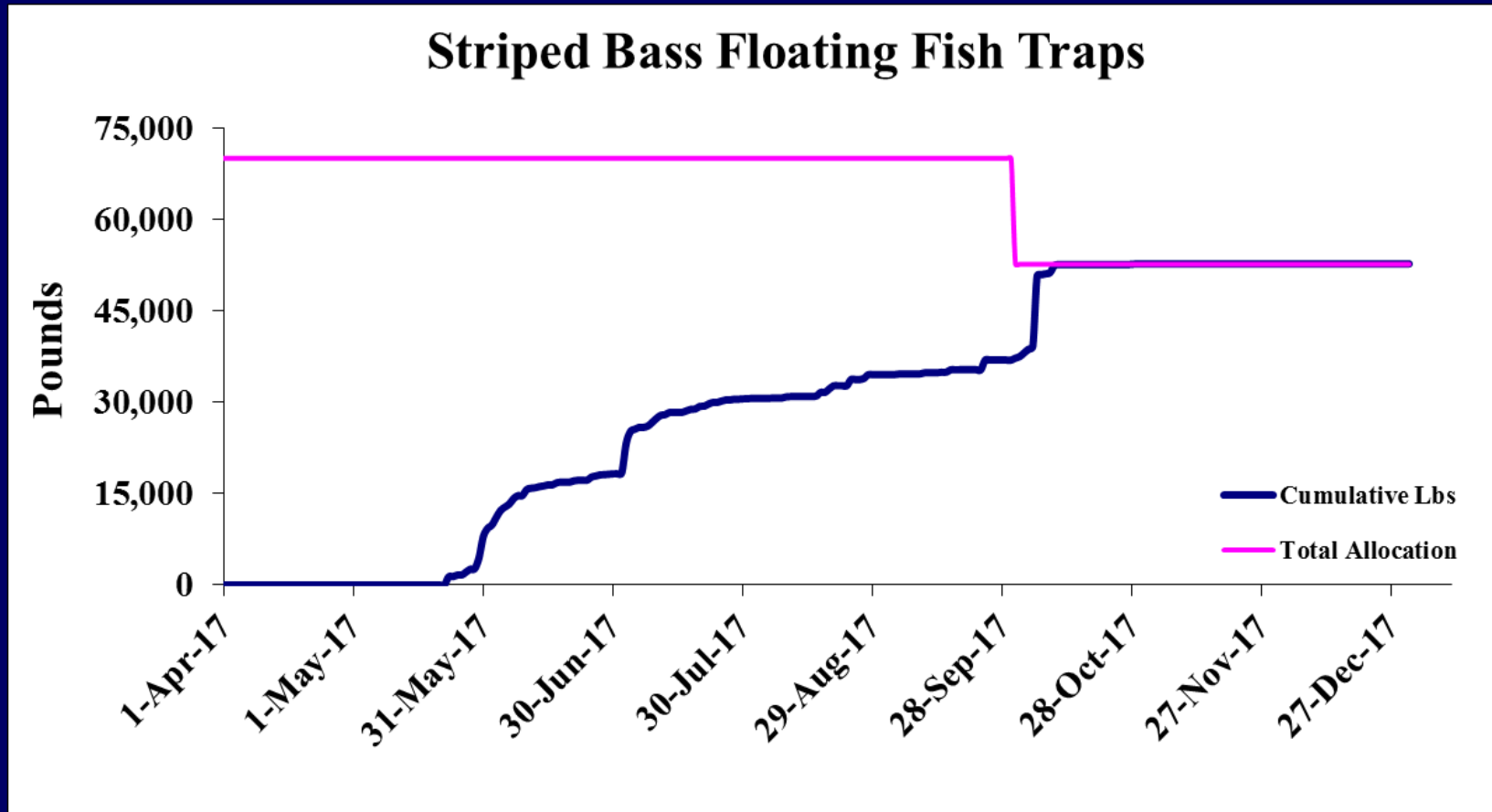
Option	Min. Size	Season	Allocation	Possession Limit
<u>Option 1:</u> <u>Status quo</u>	34"	5/28 – 8/31 (closed Fri & Sat)	70%	5 fish/person/day (max 5 fish/vessel)
		9/8 – 12/31 (closed Fri & Sat)	30%	5 fish/person/day (max 5 fish/vessel)
<u>Option 2:</u> <u>Industry proposal</u>	34"	5/28 – 8/31 7/31 (closed Fri & Sat)	70%	5 fish/person/day (max 5 fish/vessel)
		9/10 8/1 – 12/31 8/31 (closed Fri & Sat)	30%	

- Will also be soliciting feedback from the RIMFC on how to handle GC re-openings when sub-period quota is under-harvested, would like feedback from the public as well



2017 RI Commercial Fishery Performance - Floating Fish Trap

- Quota = Initial - 69,992 lbs, After Rollover – 52,609 lbs
- No underage/overage in 2017



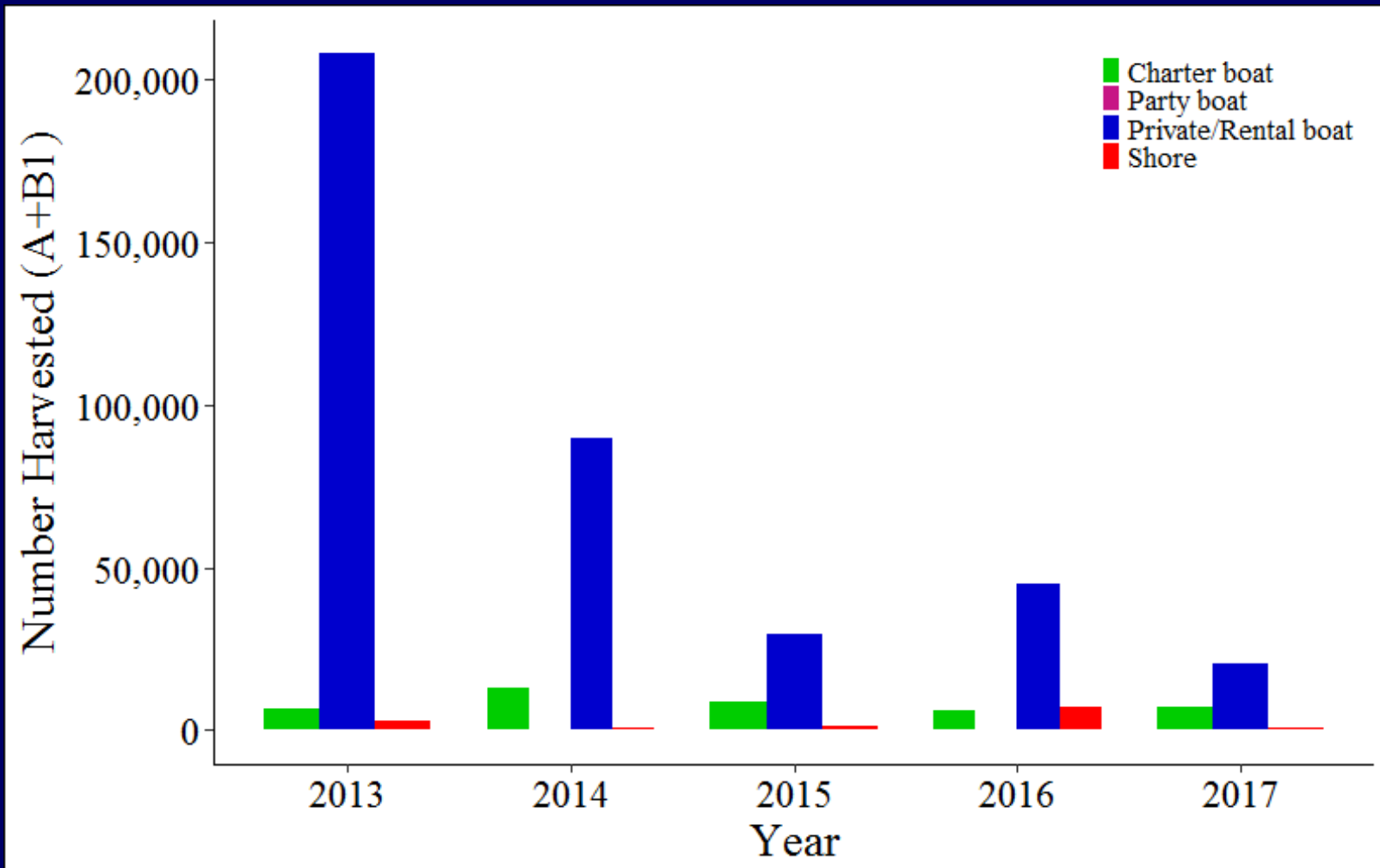
Commercial Floating Fish Trap Striped Bass Proposed 2018 Management Options

- RI 2018 Commercial Quota = 181,572 lbs:
 - General Category: 111,459 lbs
 - Floating Fish Trap: 70,113 lbs

Option	Min. Size	Possession Limit	Season
<u>Option 1:</u> Status Quo	26"	Unlimited	4/1 – 12/31
<u>Option 2:</u> Modify FFT Rollover Provision	Maintain current management and remove the October 15 th date from the rollover provision <i>(Part 3 – Finfish, section 3.9.2(A)(3))</i>		



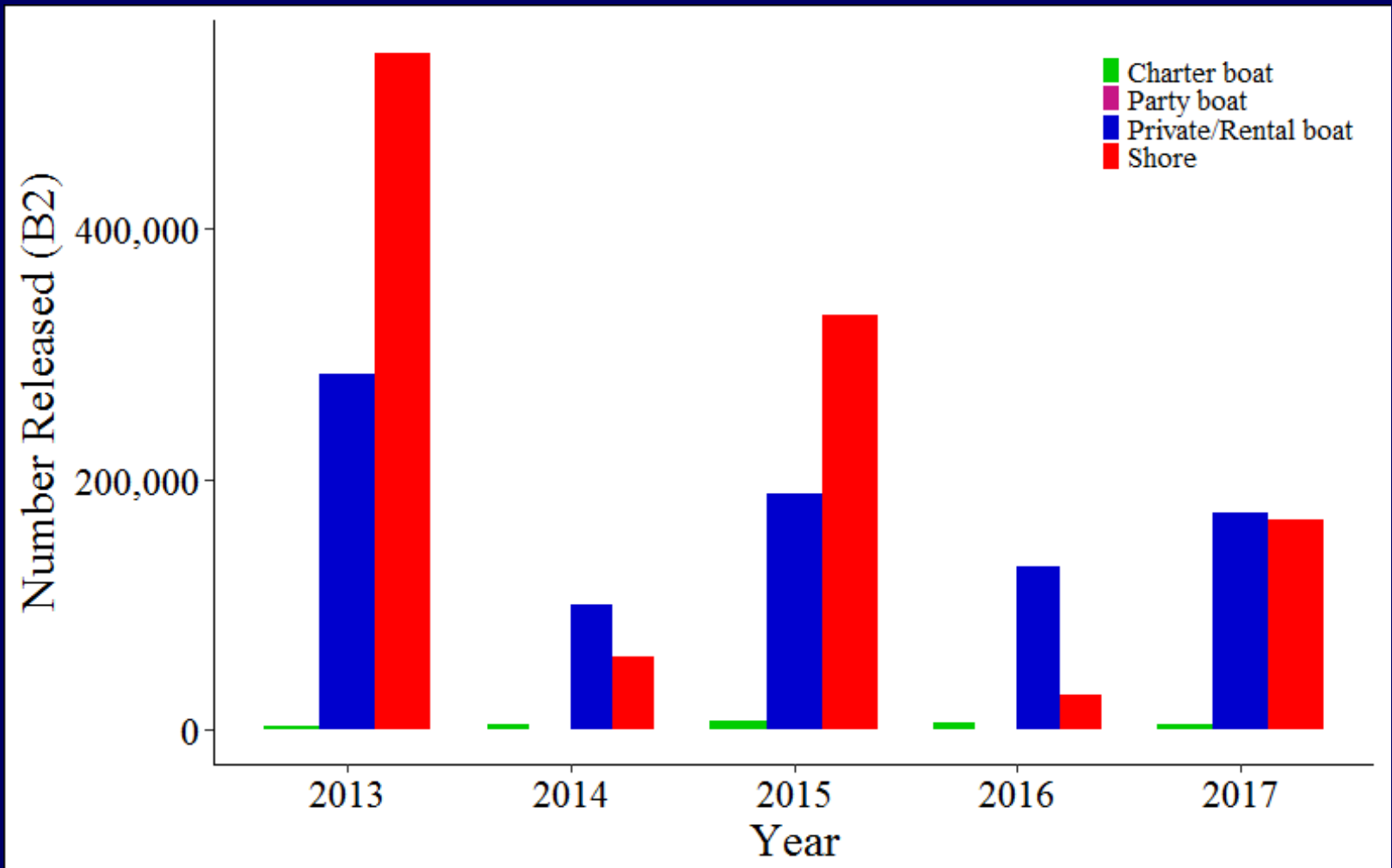
RI Recreational Striped Bass Fishery Performance



Source: 2017 MRIP, 2017 data preliminary and only through wave 5



RI Recreational Striped Bass Fishery Performance cont'd:



Source: 2017 MRIP, 2017 data preliminary and only through wave 5



Recreational Striped Bass 2018 Proposed Management Options

- No changes proposed for 2018

Current Management	Min. Size	Possession Limit	Season
	28"	1 fish/person/day	Open year round





Skate

- Summary of Stock Status
- NEFMC Management of Skate Complex and changes to Bait Skate
- Recommendations/proposals for the 2018 Commercial Bait Skate Fishery



Skate (Winter & Little) Stock Status

- Skate Stock Status Update (Aug 2017), based on most recent 3 years of NEFSC Trawl Survey data, shows that Winter and Little Skate are not overfished, and overfishing is not occurring. Barndoor was rebuilt as of fall of 2016.

- The 3-year average for:

- Winter skate increased
- Little skate decreased

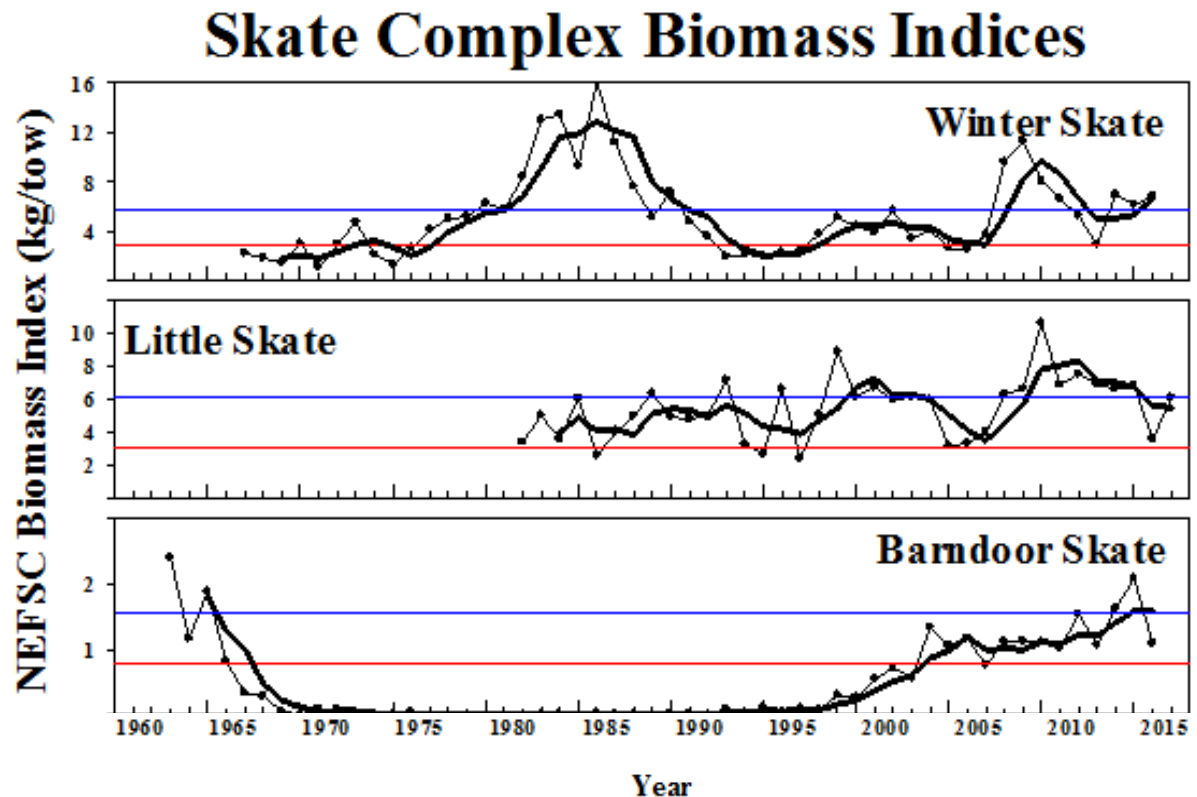
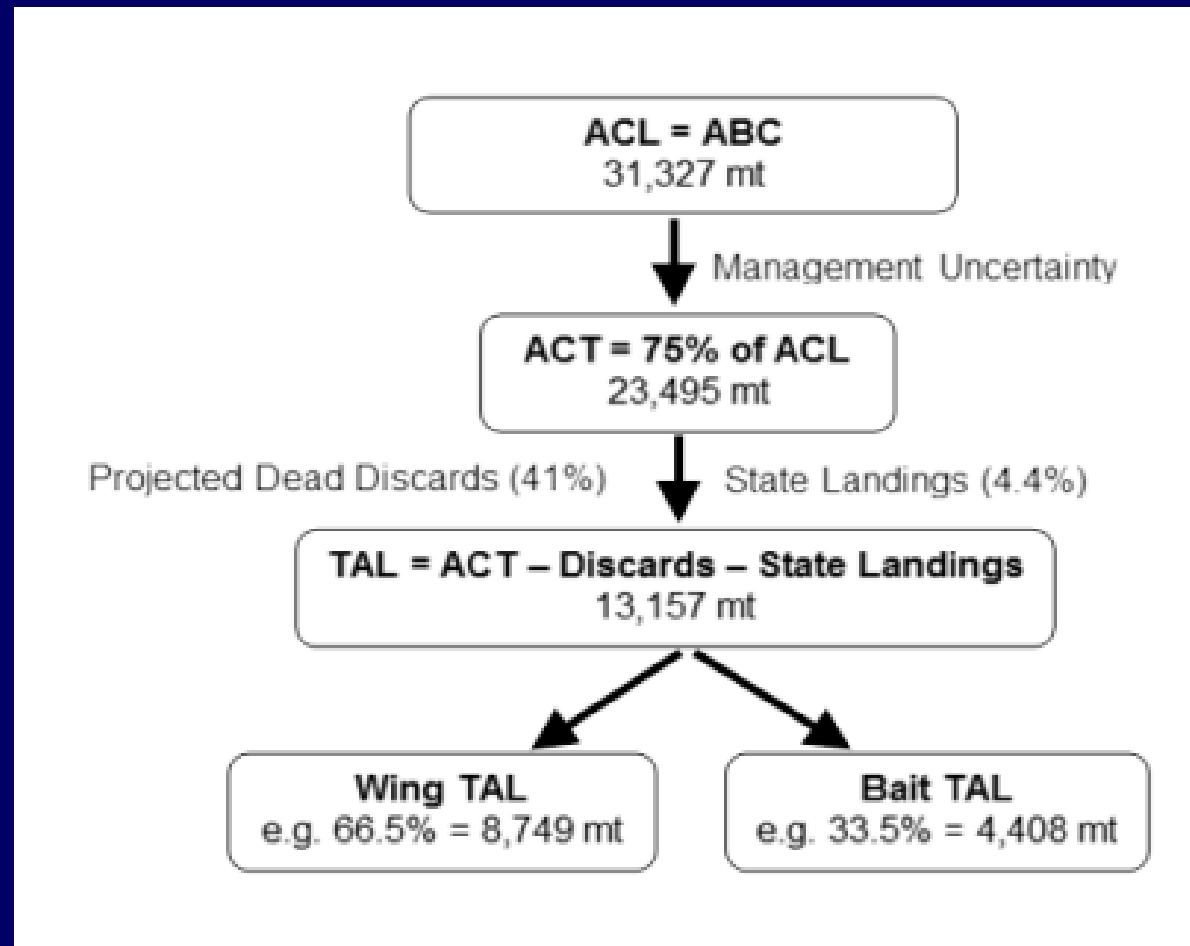


Figure 2 - NEFSC survey biomass indices (kg/tow). Thin lines with symbols are annual indices, thick lines are 3-year moving averages, and the thin horizontal lines are the biomass thresholds using consistent FSV Albatross/Bigelow strata.



NEFMC Skate Management

- The NEFMC approved Framework Adjustment 5 to the Northeast Skate Complex Fishery Management Plan (FMP). The framework contains specifications for the 2018 and 2019 fishing years, including total allowable landings (TALs) for both the skate wing and skate bait fisheries.



NEFMC Bait Skate Management

- The NEFMC approved Framework 4, which contains the following seasons and possession limits for the Bait Skate fishery.
- Will look to amend the RI Skate regulations to complement the federal Skate Bait FMP.

Table 2. Skate Bait Fishery Seasons

Season		Percentage of Skate Bait TAL
1	May 1-July 31	30.8
2	August 1-October 31	37.1
3	November 1-April 30	Remainder of Skate Bait TAL

Framework Adjustment 4 Skate Bait Fishery Possession Limits and Triggers

	Season 1 May 1-July 31 30.8% of TAL allocated	Season 2 August 1-October 31 37.1% of TAL allocated	Season 3 November 1-April 30 Remainder of TAL
25,000 pounds	X	X	
12,000 pounds			X
80% trigger			X
90% trigger	X	X	
8,000-pound Incidental limit	X	X	X
Closure			X





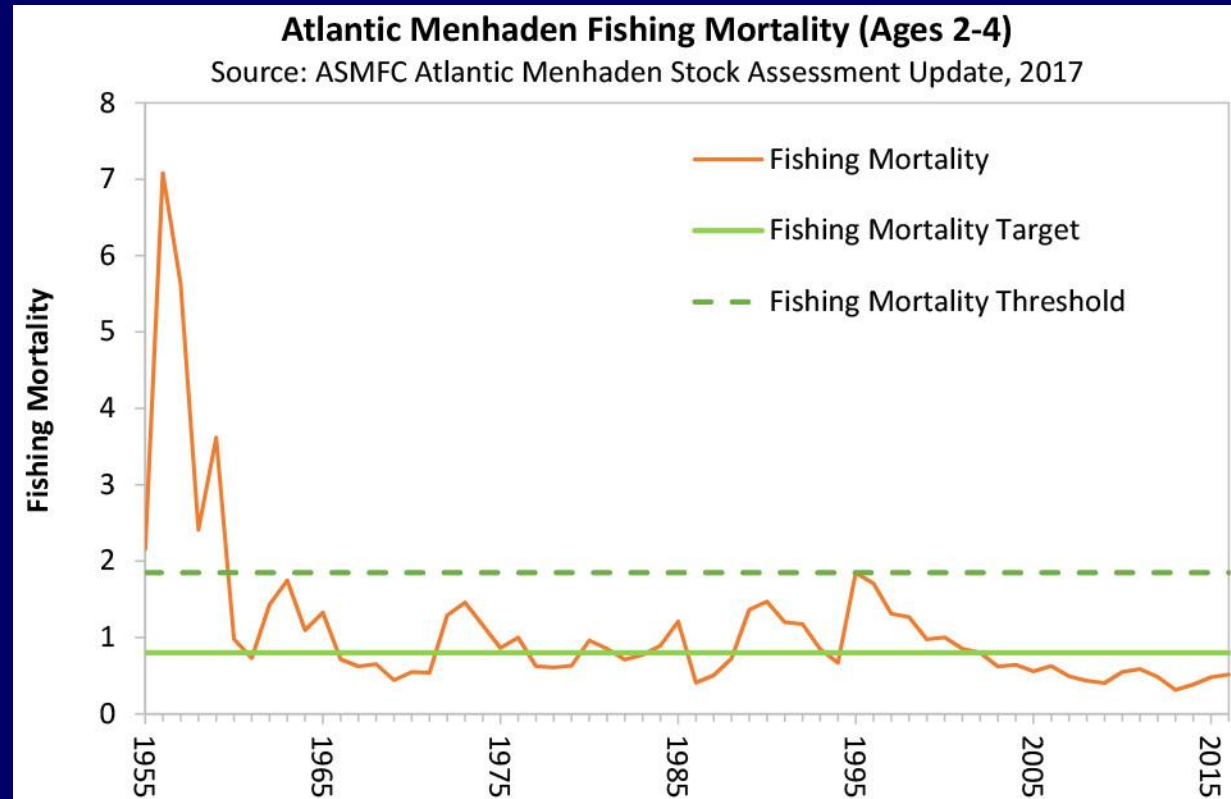
Menhaden

- Summary of Stock Status
- ASMFC Management of Menhaden
- 2017 Rhode Island Commercial Fishery Performance
- Recommendations for the 2018 Menhaden Fishery



Menhaden Stock Status

- Update in 2017: Based on 2015 ASMFC/SEDAR assessment
- The population is not overfished and overfishing is not occurring (ASMFC, 2017).
- Fishing mortality was estimated to be 0.51 in 2016, a level below the fishing mortality Threshold ($F_{21\%}=1.85$) and the fishing mortality target ($F_{36\%}=0.8$).

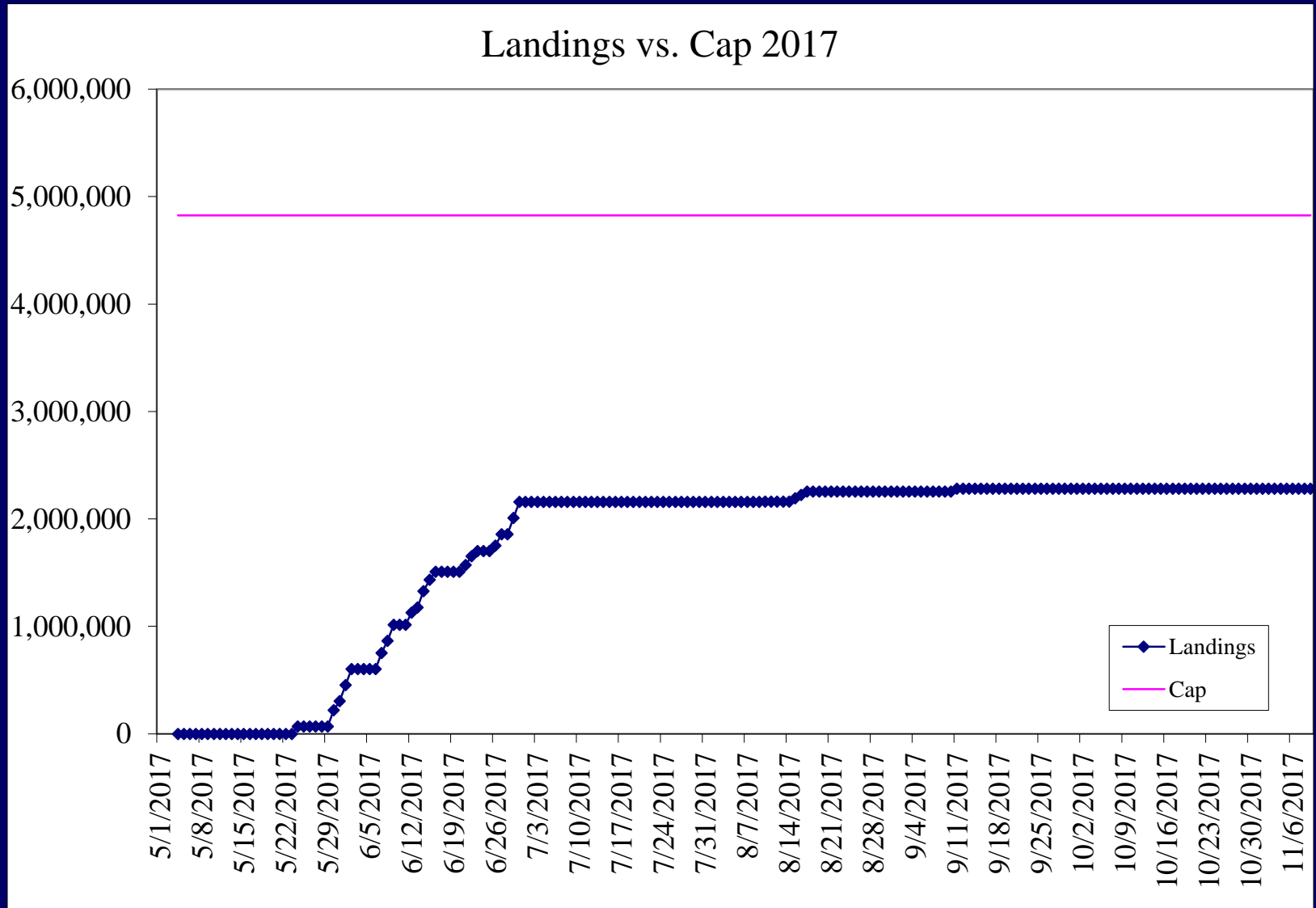


ASMFC Management of Menhaden

- Amendment 3 approved in 2017:
 - Total allowable catch (TAC) increased 8% for 2018 and 2019 (216,000 mt).
 - State-by-state quota allocations:
 - Each state allocated 0.5% fixed minimum with remainder of the TAC distributed based on 2009-2011 historic landings. RI = 2,440,542 lbs.
 - Quota transfers allowed.
 - Quota rollovers not allowed.
 - Incidental catch and small-scale fisheries:
 - After quota is harvested the fishery becomes incidental catch with a 6,000 lb/vessel/day possession limit for non-directed and small-scale fisheries.
 - Two licensed individuals working from the same vessel fishing stationary multi-species gear may harvest 12,000 lbs/vessel/day.
 - Episodic events remains the same at 1% of overall TAC (4,761,985 lbs).
- Board currently moving forward with development of:
 - Ecological based reference points.



2017 RI Landings*

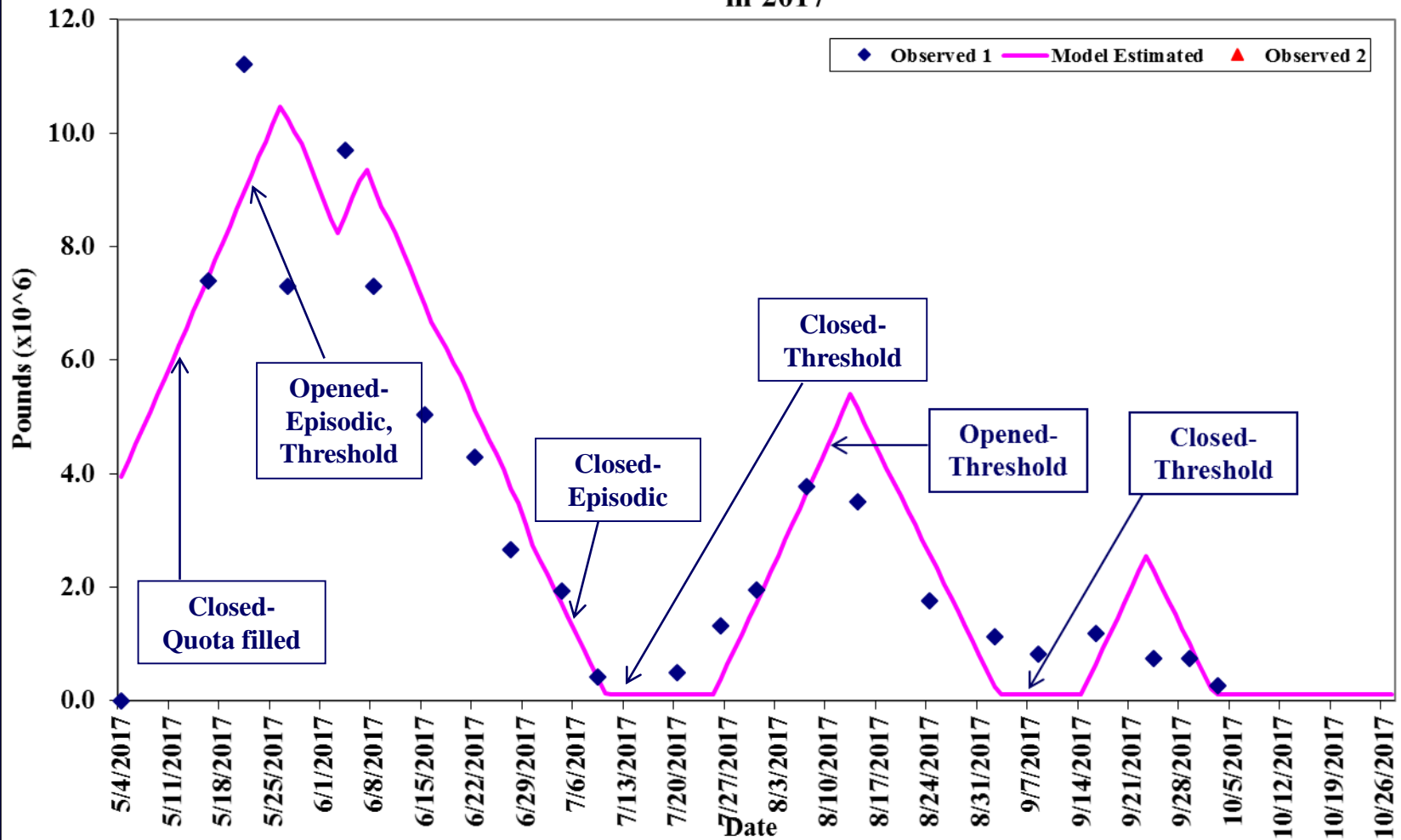


* Note: Actual landing amounts transformed to protect confidentiality



2017 RI Spotter Pilot Observations

Observed and Model Estimated Spotter Index of Menhaden in Narragansett Bay in 2017



Commercial Menhaden

- 2017 Landings by sector

Quota	Total Landings	Quota Remaining	Bycatch Landed (< 6,000 lbs)	Episodic Event Landings
78,195	153,408	-75,213	131,176	Confidential

- 2017 Overage to be deducted from 2018 quota



Commercial Menhaden

Proposed 2018 Management Options

- Division proposal for ASMFC compliance:
 - Define non-directed, small-scale, and stationary multi-species gear
 - Non-directed: Anchored/stake gillnets, trawls, fyke nets, floating fish traps.
 - Small-scale: Cast nets, pots, hook and line, hand lines, trammel nets, bait nets.
 - Stationary multi-species: Anchored/stake gillnets, floating fish traps, fyke nets.
 - Allow 6,000 lb/vessel/day possession limit for non-directed and small scale gears upon fishery closure.
 - Allow 12,000 lb/vessel/day possession limit for stationary small-scale gear when 2 licensed individuals are on the same vessel and state quota has been reached.
 - Modify starting possession limit under state quota from unlimited to 120,000 lbs/vessel/day.

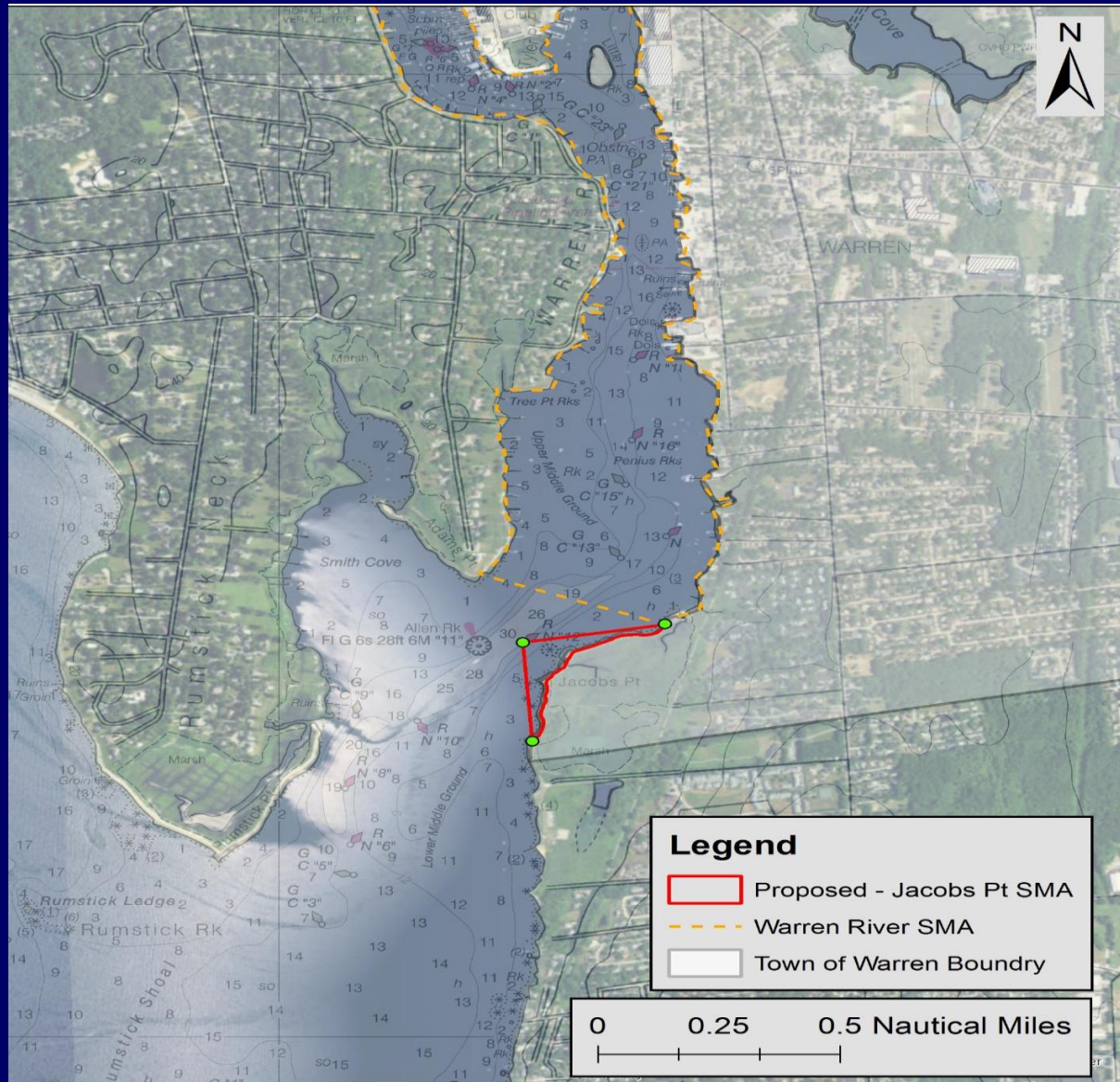


Commercial Menhaden Proposed 2018 Management Options

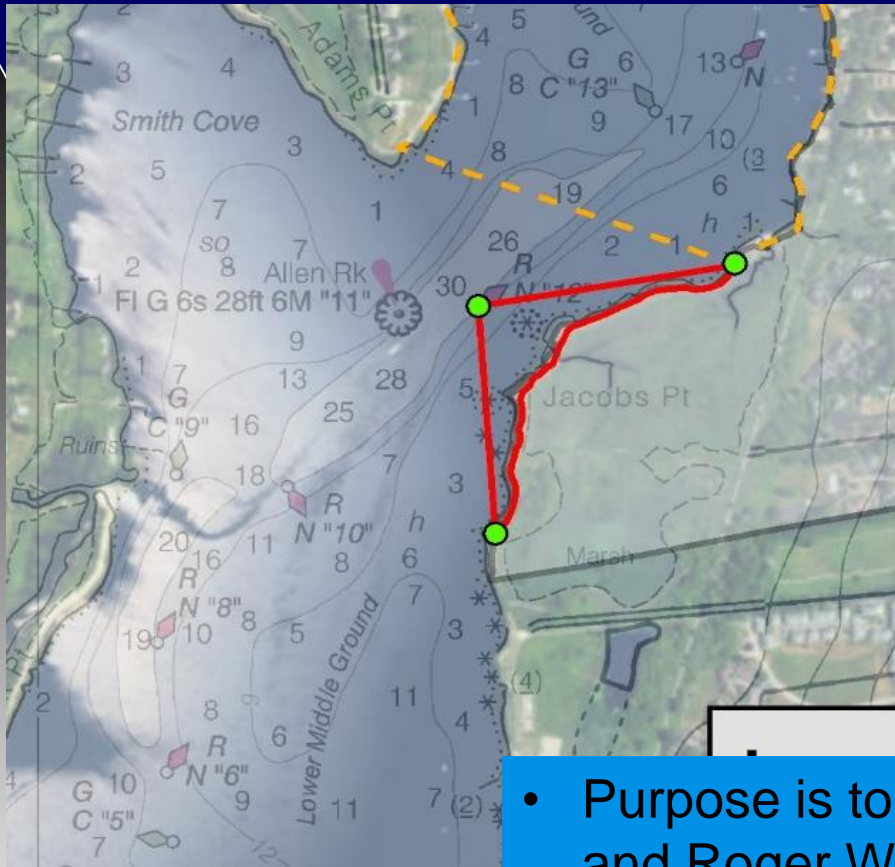
- Division proposal for ASMFC compliance cont'd:
 - Add provision stating that only one landing per purse seine operation or company per day is permitted.
 - Allow possession or taking of menhaden on any Saturday, Sunday, official state holiday, or prior to sunrise or following sunset, for non-directed gear or small-scale gear.
 - Modify call-in reporting requirement language to only apply to purse seine operations.
 - Modify episodic event set aside program language to allow participation from all gear types.
 - Modify other minor instances where “non-directed gear” was used to include non-directed and small-scale gear.



Proposed Jacob's Point Shellfish Management Area



Proposed Jacob's Point Shellfish Management Area



- Purpose is to facilitate support to town of Warren and Roger Williams Univ. for seeding of oysters
- Goals includes short-term enhanced opportunities for commercial and recreational harvest, long-term potential for increased sustainability of the resource, as well as a strong educational tool for school children and the general public.
- Proposed reduced commercial possession limit of one peck/day for oysters



Proposed clarification of language regarding shellfish harvest in areas declared polluted (Part 4 – Shellfish).

- See annotated language (Part 4, section 4.7(B)&(C)). This is a clarification of language only; no actual changes proposed



Proposed clarification of language regarding prohibited area for the harvest of Surf clams (Part 4 – Shellfish).

- See annotated language (Part 4, section 4.8(L)(2). This is a clarification of language only; no actual changes proposed



Proposal to broaden the floating buoy line prohibition within eight (8) feet of the surface of the water to all pots (Part 6, section 6.7(C)(3))

- Proposal originated from Div. of Law enforcement
- Requirement currently applies only to Black sea bass and Scup pots.
- Proposal is to broaden rule so is applicable to all fixed fishing gear
- Would not apply to net float lines



Proposal to broaden the buoy and vessel color scheme requirement to all pots (Part 6, section 6.7(C)(4)&(5))

- Proposal originated from Div. of Law Enforcement
- Requirement currently applies only to Lobster pots.
- Proposal is to broaden rule and apply to all pots and vessels that harvest pots



End of Slides!

