

NOTICE TO FISHERMEN

Geotechnical Survey to start January 17, 2018
Estimated duration 28 days
(weather permitting)



RV Fugro Explorer

261 ft. Flag: Panama

Bridge satellite phone: 1 713 489 3204

Explorerbridge@fugro.com

Standing by on VHF channel 16

Geotechnical Survey of the Bay State Wind area

For the next two years Bay State Wind will collect data on the physical, biological and economic characteristics of BOEM lease area OCS-A0500 south of Martha's Vineyard, MA to assess suitability for the construction of an offshore wind farm. In January and February 2018 Bay State Wind will conduct a geotechnical survey of the seabed at 30 fixed locations (see chart on reverse side); the survey vessel will remain stationary at each location for approximately 2 to 24 hours at a time using dynamic positioning.

Fishermen are requested to **provide RV Fugro Explorer a wide berth of one half-mile**. Passing vessels are requested to reduce speed if possible.

A local fisherman will serve on board the RV Fugro Explorer to coordinate research activities with fishing activities in the area, advising the vessel master to avoid conflicts. Fishermen working in the Survey Area are requested to call for station coordinates:

John Larner, on board Fishing Industry Representative

Standing by on VHF channel 16

In advance of operations, please contact:

John Williamson, Orsted Fishery Liaison Officer

Cell: 207 939-7055 john@seakeeper.net



Fishermen may obtain laminated copies of this Notice for onboard use by texting or emailing a home mailing address.

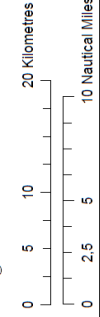
Bay State Wind Geotechnical Locations Overview

- Legend**
- X Geotechnical Locations
 - Loran C Lines
 - Bay State Wind Site Area
 - Lease Area CCS-A, 0500

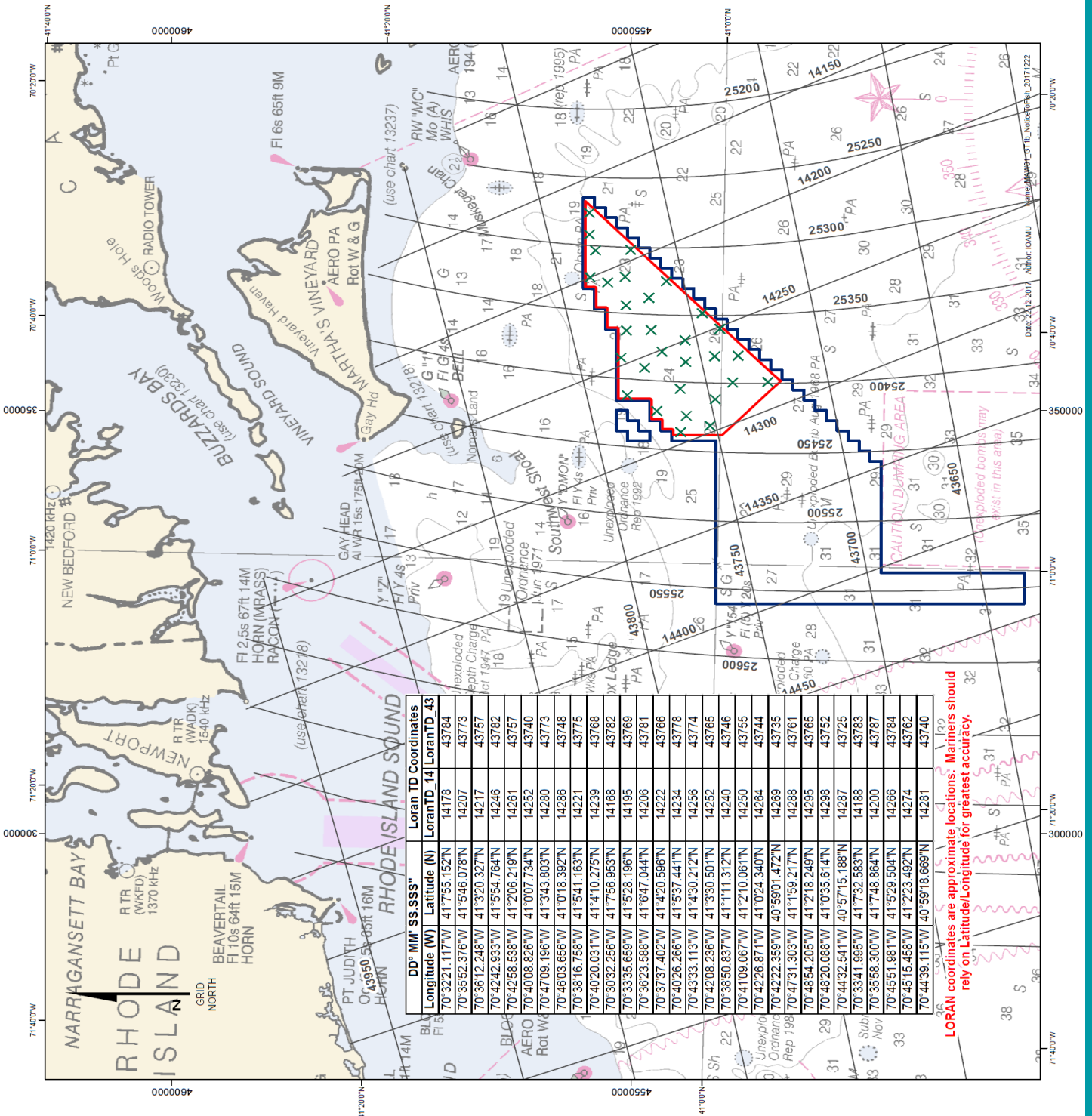


Coordinate system: NAD 1983 2011 UTM Zone 19N

Scale@A3: 1:400000



MAW01
Created by: IOAMU
Checked by: KLABY
Approved by: MALZO



DD° MM' SS.SSS"	Latitude (N)	Longitude (W)	Loran TD Coordinates
70°32'21.117"W	41°7'55.152"N	14178	LoranTD_14 LoranTD_43
70°35'52.376"W	41°5'46.078"N	14207	43784
70°36'12.248"W	41°3'20.327"N	14217	43773
70°42'42.933"W	41°5'54.764"N	14246	43757
70°42'58.538"W	41°2'06.219"N	14261	43782
70°40'08.828"W	41°0'07.734"N	14252	43740
70°47'09.196"W	41°3'43.903"N	14280	43773
70°46'03.656"W	41°1'18.392"N	14286	43748
70°38'16.758"W	41°5'41.163"N	14221	43775
70°40'20.031"W	41°4'10.273"N	14239	43768
70°30'32.256"W	41°7'56.953"N	14168	43782
70°33'35.659"W	41°5'28.196"N	14195	43769
70°36'23.588"W	41°9'47.044"N	14206	43781
70°37'37.402"W	41°4'20.596"N	14222	43766
70°40'26.266"W	41°5'37.441"N	14234	43778
70°43'33.113"W	41°4'30.212"N	14256	43774
70°42'08.236"W	41°3'30.501"N	14252	43765
70°38'50.837"W	41°1'11.312"N	14240	43746
70°41'09.067"W	41°2'10.061"N	14250	43755
70°42'26.871"W	41°0'24.340"N	14264	43744
70°42'22.359"W	40°59'01.472"N	14269	43735
70°47'31.303"W	41°1'59.217"N	14288	43761
70°48'54.205"W	41°2'18.249"N	14295	43765
70°48'20.088"W	41°0'35.614"N	14298	43752
70°44'32.541"W	40°57'15.188"N	14287	43725
70°33'41.995"W	41°7'32.583"N	14188	43783
70°45'51.981"W	41°5'29.504"N	14200	43787
70°45'15.458"W	41°2'23.492"N	14274	43784
70°44'39.115"W	40°59'18.669"N	14281	43740

LORAN coordinates are approximate locations. Mariners should rely on Latitude/Longitude for greatest accuracy.