

Please Drop In...

Wednesday, January 24, 2018 from 12pm to 6pm



Where:

Conference Room at North East Safety Training
Company (above Superior Trawl)
55 State St, Narragansett, RI 02882

Contact:

Rodney Avila
Fisheries Liaison
Phone: 1-508-889-0401
Email: ravila@dwwind.com

What's Happening?

Deepwater Wind is planning for the development of offshore wind energy within the Rhode Island – Massachusetts Wind Energy Area which is located southeast of Rhode Island. The first project is the South Fork Wind Farm, which includes 15 wind turbines and a submarine cable to East Hampton, NY.

Our team will be in Point Judith, RI on **Wednesday, January 24, 2018 from 12pm to 6pm** and invites you to come by and meet with us. This is an opportunity for fisheries stakeholders to learn more about our planned developments and ask questions. We will have an open door format and several stations will be set up for stakeholders to visit. Each station will be manned by team members who can provide details on the different aspects of the project.

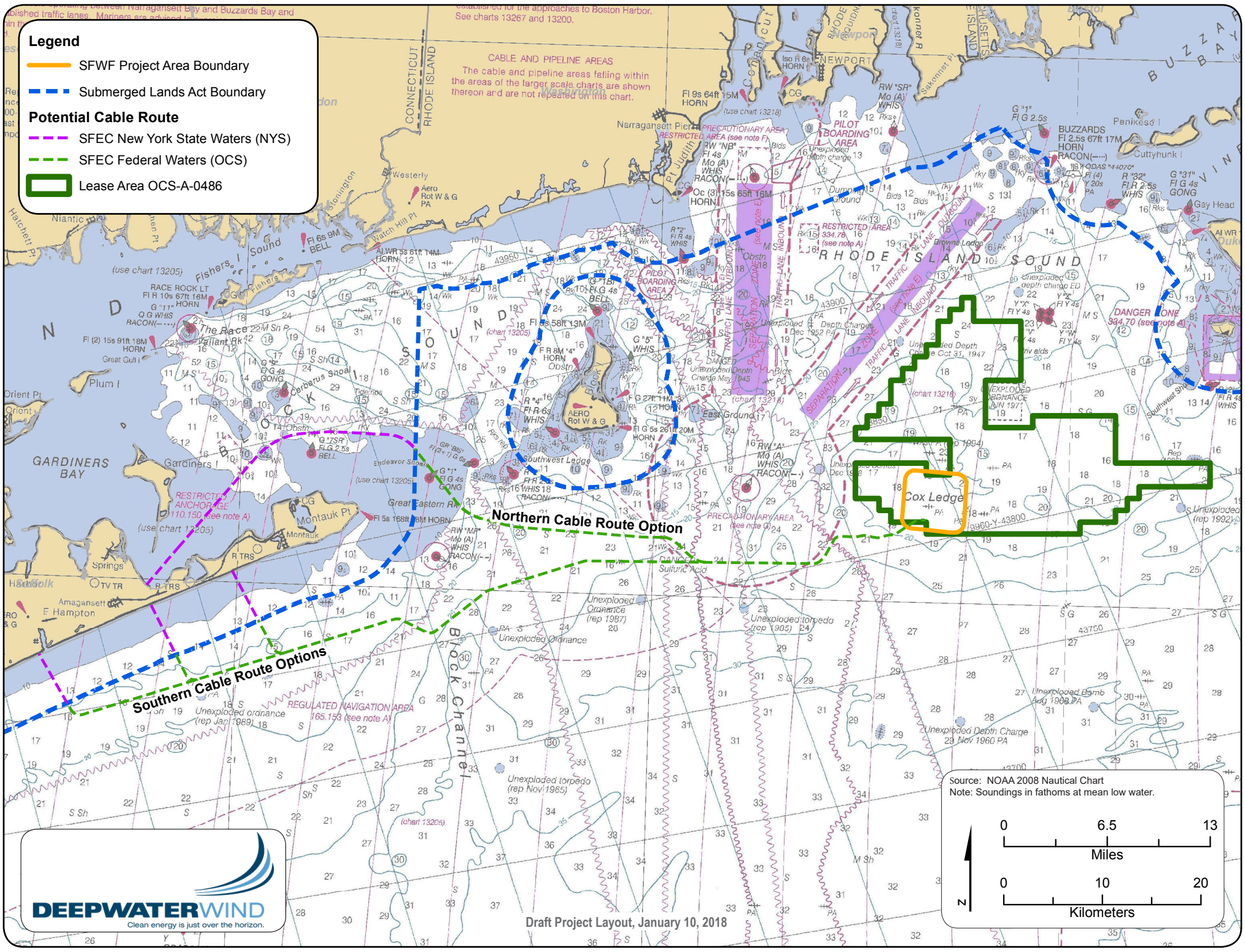
To learn more about us and our projects, please visit our website at www.dwwind.com

For more information and fisheries-related inquiries, contact:

Rodney Avila, Fisheries Liaison, Phone: 1-508-889-0401
Email: ravila@dwwind.com

Legend

- SFWF Project Area Boundary
- Submerged Lands Act Boundary
- SFEC New York State Waters (NYS)
- SFEC Federal Waters (OCS)
- Lease Area OCS-A-0486



Draft Project Layout, January 10, 2018

Source: NOAA 2008 Nautical Chart
Note: Soundings in fathoms at mean low water.

0 6.5 13
Miles
0 10 20
Kilometers