



MATTHEW J. HUGHES

The *Matthew J. Hughes* is an offshore utility vessel that will be used for acquiring horizontal and vertical positions in real-time. Length of the vessel is 114', with a width of 24'. This vessel has a gross tonnage of 97 t.

Call Sign WDD6860



SEACOR SUPPORTER

The Seacor Supporter is a class 200' liftboat used to conduct deep geotechnical surveys. The vessel has 3 legs, each 200' long. The hull of the vessel measures 132', with a 77' beam. Registered tonnage of the vessel is 139 t / 94 t.

Official Number 1062039
Call Sign WDG 3587
IMO 8766052

*Expected Survey Vessels / subject to change



OVERVIEW

The South Fork Wind Farm (SFWF) is a planned offshore wind farm located 30 miles east of Montauk. The wind farm will consist of an offshore substation and a subsea transmission system able to deliver clean energy to East Hampton. Marine survey activities are scheduled to begin in July 2018. Marine construction is planned to start 2021.

Notices to Mariners are submitted as needed to the U.S. Coast Guard and distributed to the fishing community and interested mariners on our website at:

dwwind.com/information-for-mariners

VESSELS WILL DESIGNATE A WORKING CHANNEL DAILY ON VHF 16 AT 0600 AND 1800

NOTICE FOR MARINERS

MARINER SAFETY

Deepwater Wind will be performing survey operations along the cable route and project site.

PROJECTED START: July 2018
PROJECTED END: November 2018

During those times, all mariners transiting or fishing in the survey area are requested to provide a wide berth to survey vessels as they will be limited in their ability to maneuver (VRAM).

Vessels in the vicinity of the survey vessel should operate in a manner that will not endanger the vessel or associated equipment.

CONTACT

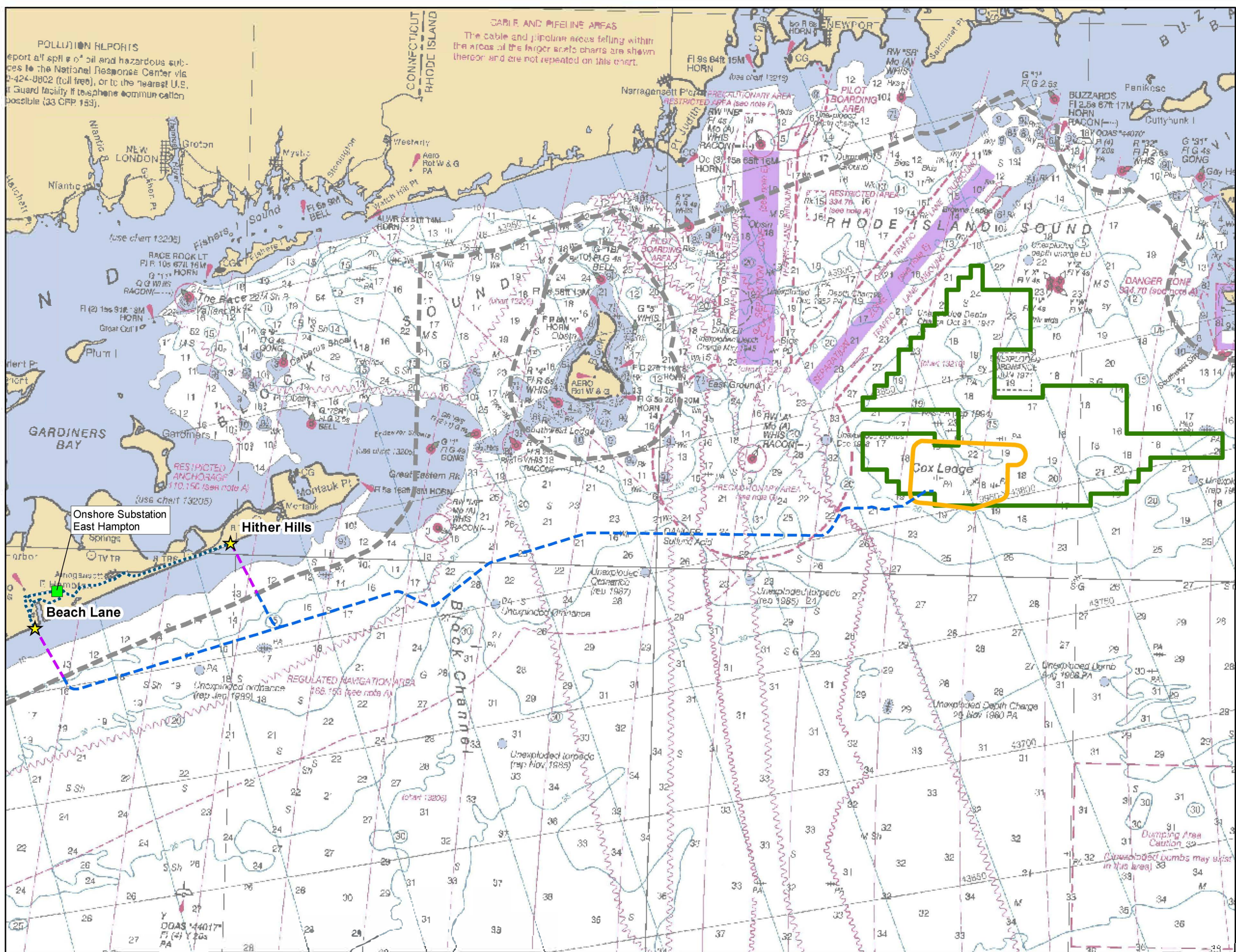
FOR FISHERIES RELATED INQUIRIES:

RODNEY AVILA
FISHERIES LIAISON
Phone: 508.889.0401
Email: ravila@dwwind.com

JULIA PRINCE
FISHERIES LIAISON
Phone: 631.662.3775
Email: jprince@dwwind.com

JOHN O'KEEFFE
MANAGER, O&M AND MARINE AFFAIRS
Phone: 401.868.4228
Email: jokeeffe@dwwind.com





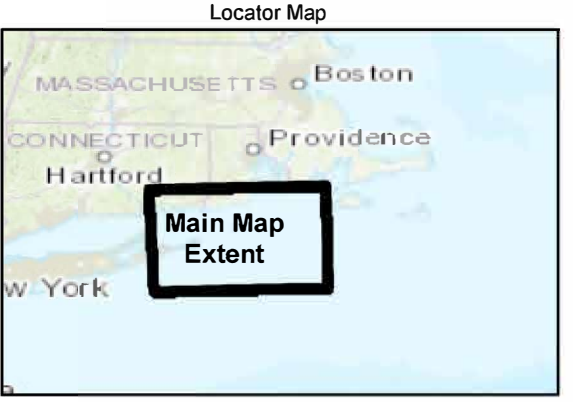
POLLUTION REPORTS
 Report all spill of oil and hazardous substances to the National Response Center via 1-800-424-8802 (toll free), or to the nearest U.S. Coast Guard facility if telephone communication possible (33 CFR 153).

CABLE AND PIPELINE AREAS
 The cable and pipeline areas falling within the areas of the larger scale charts are shown thereon and are not repeated on this chart.

Onshore Substation
 East Hampton

Hither Hills

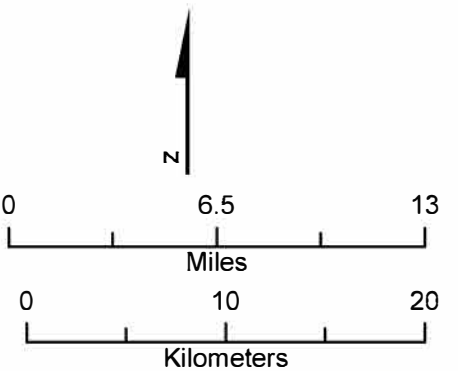
Beach Lane



- Legend**
- 3-Nautical Mile State Waters Boundary
 - ▭ Lease Area
 - South Fork Wind Farm (SFWF)**
 - ▭ SFWF Maximum Work Area (including all anchor/mooring areas)
 - South Fork Export Cable (SFEC)**
 - ▬ SFEC New York State Waters (NYS)
 - ▬ SFEC Federal Waters (OCS)
 - ⋯ SFEC Onshore (Potential Route)
 - SFEC Onshore Substation
 - ★ Potential SFEC Landing Site

DRAFT

Source:
 Historical NOAA Nautical Charts (2008, 2009).
 Soundings in fathoms at mean low water.



South Fork Wind Farm and
 South Fork Export Cable
 Deepwater Wind
 New York/Rhode Island, US

