



## MAYFLOWER WIND: POWERING NEW ENGLAND'S ENERGY FUTURE

Mayflower Wind is developing a federal offshore lease area, located over 30 miles south of Martha's Vineyard and 20 miles south of Nantucket, that has the potential to generate well over 2,000 megawatts (MW) of low-cost clean energy, or enough to power over half a million homes. We expect to deliver clean energy from the project by the mid-2020s.

We are guided by our core values:

- **Zero Harm:** We are committed to treating our people, community and environment with care
- **Investing in Communities:** We are committed to building responsible partnerships by supporting economic development and providing jobs
- **Innovation and Industry Development:** We expect innovation will continue to drive the rapid decline in the cost of wind energy and we aim to be a leader in this industry

Mayflower Wind deploys robust, science-driven decision making to research, develop, and implement innovative solutions in successfully delivering the project. Ongoing geophysical and geotechnical surveys provide critical data about the seafloor and subsea for evaluation in the project design and permitting process.

### WHO:

50/50 joint venture between Shell and Ocean Winds



### WHAT:

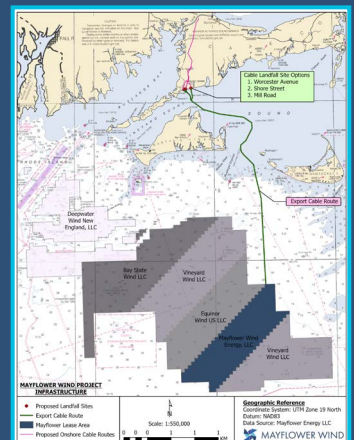
Potential for over 2,000 MW of offshore wind energy, enough to power half a million homes

### WHEN:

Expected to deliver low-cost clean energy by the mid-2020s

### WHERE:

Federal lease area is located 30 miles south of Martha's Vineyard and 20 miles south of Nantucket



### WHY:

Mayflower Wind will be among the single largest contributors towards the Commonwealth's net-zero carbon emissions goals

### HOW:

Backed by two world-leading energy companies with deep experience in managing the complexities of offshore energy development projects

# 2021 GEOPHYSICAL & GEOTECHNICAL SURVEYS

APRIL – AUGUST 2021

Multiple vessels will conduct geophysical & geotechnical (G&G) surveys both within Mayflower Wind’s offshore lease area and along potential export cable routes. The 2021 surveys continue data acquisition work started in 2019.

- All survey activities are performed in accordance with federal and state regulations and health and safety policies and procedures
- Notifications are provided to the US Coast Guard and Department of the Navy
- Vessels have on board Protected Species Observers to identify and appropriately manage any issues involving protected marine wildlife, especially marine mammals and sea turtles
- Lease area vessels have on board Fisheries Representatives to identify and appropriately manage any issues involving fisheries matters
- Active coordination is underway with the Massachusetts Lobstermen’s Association to minimize impacts to fisheries in the survey areas

**Geophysical Surveys** assess the seafloor and near-surface sub-bottom using a variety of non-intrusive acoustic and magnetic technologies that use sound to map the seabed, sub-seabed, and magnetic anomalies. This information helps Mayflower Wind understand the seabed topography and any surface obstructions (boulders, or manmade materials), differences in the material and texture of the seabed, and the location of potential historical or archaeological resources.

**Geotechnical Surveys** analyze soil conditions by extracting small diameter seabed core samples. This information helps inform the foundation design for turbine locations and other project facilities. Details on geotechnical survey vessels will be provided once contracts have been awarded.

## GEOPHYSICAL SURVEY VESSELS

### LEASE AREA



VESSEL: GO PURSUIT

Mobilization: April 17  
 24-hr operations  
 Water Depths > ~12m  
 Estimate Duration ~60 to 90 days  
 LOA: 150'  
 Call Sign: WDH 6498  
 Phone: +1 337 205 7400  
 Monitoring VHF Channel 16

### EXPORT CABLE CORRIDOR



VESSEL: GO LIBERTY

Mobilization: April 19  
 Daylight operations  
 Water Depths > ~7m  
 Estimate Duration ~125 days  
 LOA: 170'  
 Call Sign: WDK6648  
 Phone: +1 337 735 1828  
 Monitoring VHF Channel 16

### EXPORT CABLE CORRIDOR



VESSEL: WESTERLY

Mobilization: April 12  
 Daylight operations, will return to port nightly  
 Water Depths > ~2m  
 Estimated Duration ~175 days  
 LOA: 50'  
 Call Sign: WDF7918  
 Phone: 805 850 9593  
 Monitoring VHF Channel 16