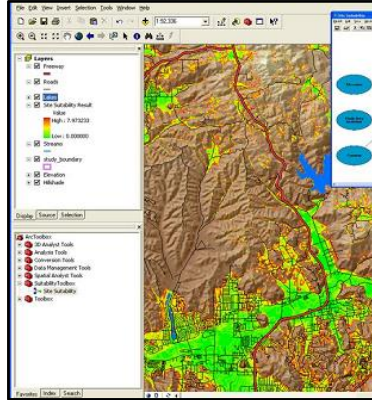


RIDEM Now Hiring Water Quality Monitoring Interns!

Investigate Water Quality, Habitat, and Biota in Rhode Island Waters

- Navigate throughout the state
- Sample lakes, streams or rivers
- Collect water, bugs and plants
- Enter, organize, and file data
- Prepare for meetings or field
- Conduct site reconnaissance
- Evaluate riparian habitats
- Research and work on policy
- Identify invasive plants
- Complete GIS analyses
- Maintain sampling facility
- Distribute outreach materials



Surface Water Monitoring Program based in Providence, RI seeks Seasonal Interns*

(May-October, start/end dates negotiable; some positions may be mostly fieldwork, other positions may be more office based)

Recommended Qualifications: Preferred applicants have completed a Bachelor's Degree by June 2020 in an environmental science related field. The candidate should possess excellent communication, organizational, and navigational skills and is familiar with computer applications (MS Office, GIS applications, statistical software) and related equipment (GPS units, water quality meters, copiers, scanners, digital camera, microscopes). Must show initiative in the office and represent RIDEM in a responsible, professional manner. Candidates able to identify freshwater aquatic plants or invertebrates and/or have previous experience in any of the following focus areas are especially encouraged to apply: community outreach, policy, data collection, data entry or databases, water quality sampling, lakes, rivers, wetlands, soils and/or hydrology.

Field positions require flexibility, positive attitude towards teamwork as well as ability to work independently. All field applicants must be able to swim, lift 30 lbs. overhead, and also possess a valid driver's license (vehicle will be provided for field transportation). Experience boating (motor) or paddling (canoe/kayak) is preferred. Fieldwork often requires working safely in undesirable conditions. Candidate must traverse variable terrain with sampling gear, avoid contact with poison ivy, accommodate being wet or muddy, and tolerate flying/biting insects, wildlife, intense sun, high/low temperatures, and inclement weather.

Time Commitment: Field candidates must be available to work full time, at least through the end of October. All seasonal interns are expected to work 35 hours per week, generally Monday-Friday 8:00 a.m. to 3:30 p.m. (may have rare weekend day or evening event, total hours per week not to exceed 35 hours) paid at \$12.25 hourly*. Seasonal interns do NOT receive benefit packages or housing.

For more job details visit the website below. To apply, follow the instructions below completely:

1. Log-in to website below to apply online and submit materials
2. <https://www.governmentjobs.com/careers/rhodeisland/jobs/2672541/seasonal-technical-support-intern>
3. Make sure to apply specifically for job listing: "08142: Seasonal Technical Support Intern"
4. Completely fill out application tabs for "Info", "Work" and "Education"
5. On "References" tab, provide contact information for three professional references
6. On "Attachments" tab, attach 2 supplemental attachments: (1) resume and (2) cover letter stating your qualifications and interests for this position (reference this position as "OWR Water Monitoring Intern").
7. Submit application online by 8:00 a.m. on Monday **March 23, 2020**

*Number of interns hired & pay rate is dependant on funding availability and approval.

Posting Updated: February 11, 2020

